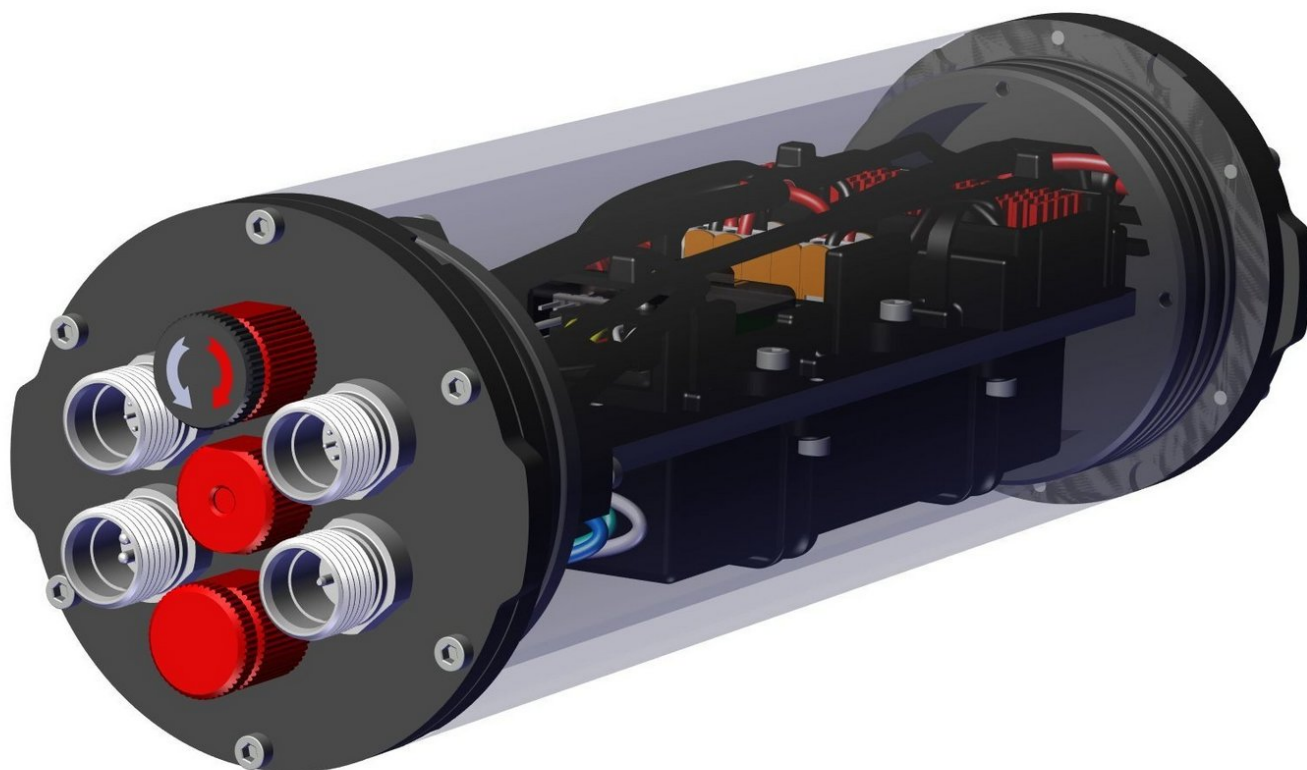




Components Supplied in the Kit

Written By: REA



INTRODUCTION

This guide outlines the parts that come in the kit that are required for the Power & Processing Module (PPM) Assembly. Find these parts and put them aside ready for the assembly guides for the PPM.

Step 1 — 3" Cast Acrylic Tube 250mm



- 1 x 3" Cast Acrylic Tube 250mm is required for the Power & Processing Module (PPM) Assembly

Step 2 — 3" O-Ring Flange



- 2 x 3" O-Ring Flange's are required for the PPM Assembly

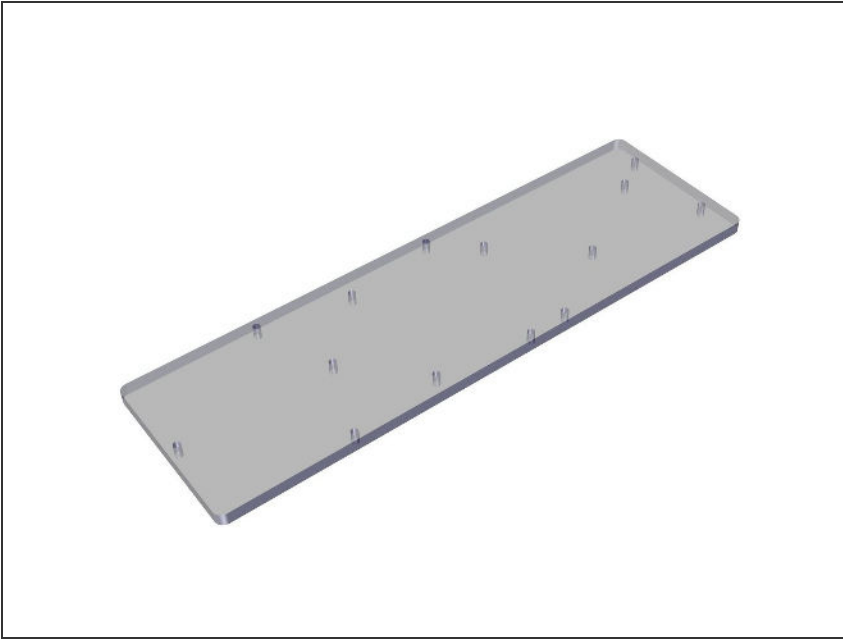
Step 3 — 3" End Cap Aluminium - 7 holes

- 1 x 3" End Cap Aluminium - 7 holes is required for the PPM Assembly

Step 4 — 3" End Cap Aluminium - No holes

- 1 x 3" End Cap Aluminium - No holes is required for the PPM assembly

Step 5 — PPM Support Plate



- 1 x Laser Cut PPM Support Plate is required for the PPM Assembly

Step 6 — M10 Cable Penetrator - Blank



- 1 x M10 Cable Penetrator - Blank is required for the PPM Assembly

Step 7 — Enclosure Vent & Plug



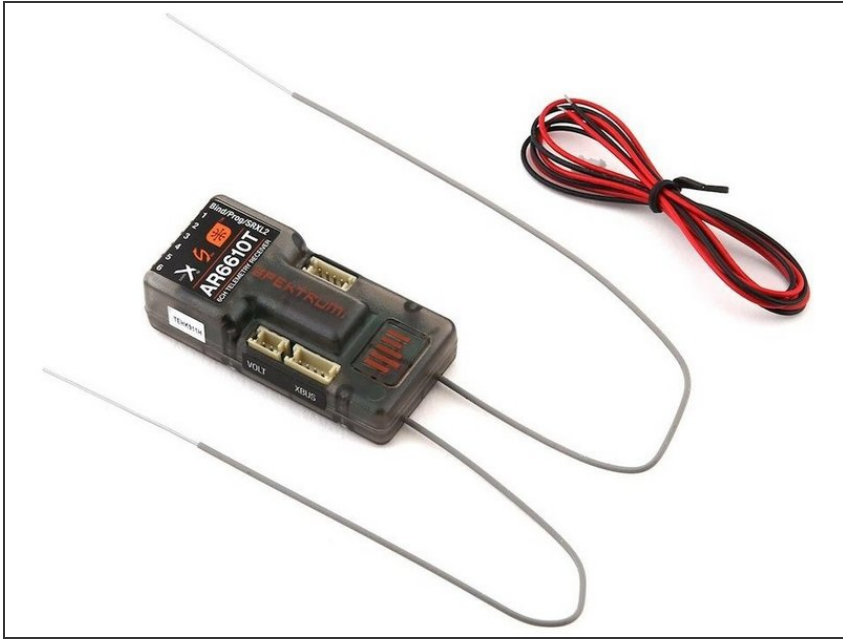
- 1 x Enclosure Vent & Plug is required for the PPM Assembly

Step 8 — Prime RC 3300mAh 3S 11.1v LiPo Battery



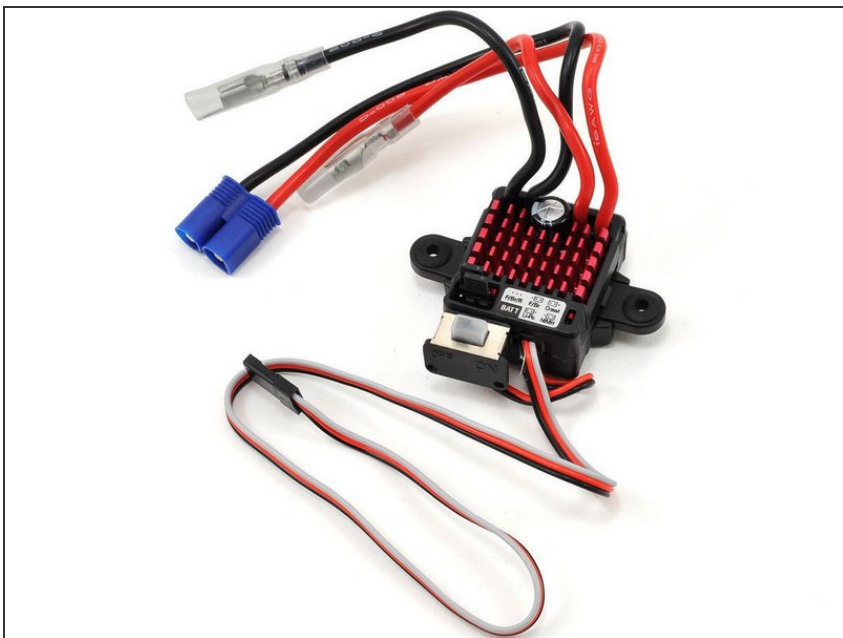
- 1 x Prime RC 3300mAh 3S 11.1v LiPo Battery is required for the PPM assembly.

Step 9 — Receiver - Spektrum AR6610T



- 1 x Spektrum AR6610T is required for the PPM Assembly

Step 10 — Peristaltic Pump ESC



- 2 x Dynamite WP Brushed ESC's are required for the PPM Assembly.

Step 11 — Thruster ESC



- 1 x Blue Robotics ESC is required for the PPM Assembly

Step 12 — Wago 221



- 2 x Wago 221's are required for the PPM Assembly

Step 13 — Inline Fuse Holder



- 1 x Littelfuse 20A Inline Fuse Holder is required for the PPM Assembly

Step 14 — 20A Blade Fuse



- 1 x 20A Blade Fuse is required for the PPM Assembly

Step 15 — EC3 Male Connector



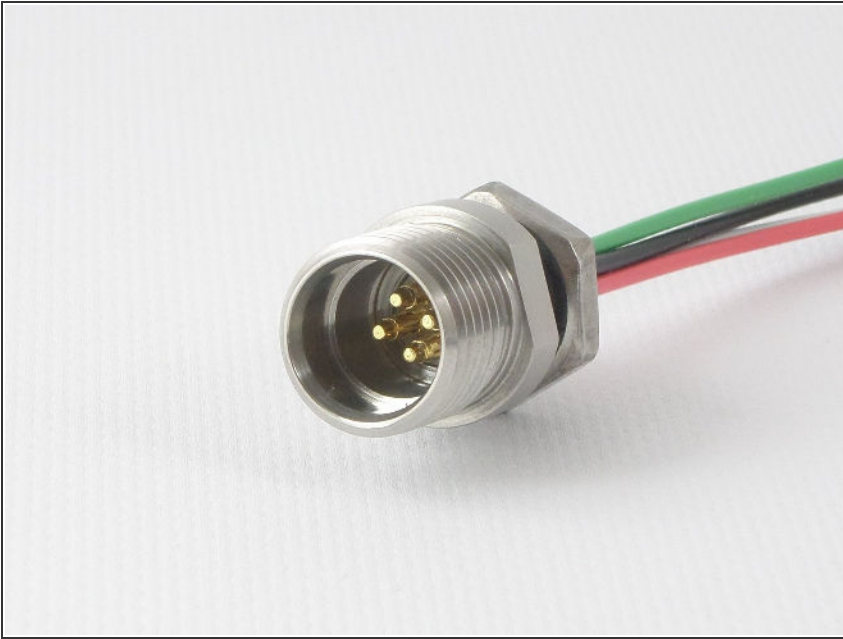
- 1 x EC3 Male Connector is required for the PPM Assembly

Step 16 — Cobalt 3 Pin Bulkhead



- 1 x Cobalt 3 Pin Bulkhead is required for the PPM Assembly

Step 17 — Cobalt 4 Pin Bulkhead



- 1 x Cobalt 4 Pin Bulkhead is required for the PPM Assembly

Step 18 — Cobalt 6 Pin Bulkhead



- 2 x Cobalt 6 Pin Bulkhead's are required for the PPM Assembly

Step 19 — Power Switch



- 1 x Power Switch is required for the PPM Assembly

Step 20 — Female Bullet Connector



- 4 x Female Bullet Connector's are required for the PPM Assembly

Step 21 — M3 x 8mm Hex Socket Cap Screw



- 11 x M3 x 8mm Hex Socket Cap Screw's are required for the PPM Assembly

Step 22 — M3 x 12mm Hex Socket Cap Screw



- 5 x M3 x 12mm Hex Socket Cap Screw's are required for the PPM Assembly

Step 23 — Black 16 AWG Wire



- 100mm of Black 16 AWG wire is required for the PPM Assembly

Step 24 — Red 16 AWG Wire



- 300mm of Red 16AWG wire is required for the PPM Assembly