



Components Supplied in the Kit

Written By: REA



INTRODUCTION

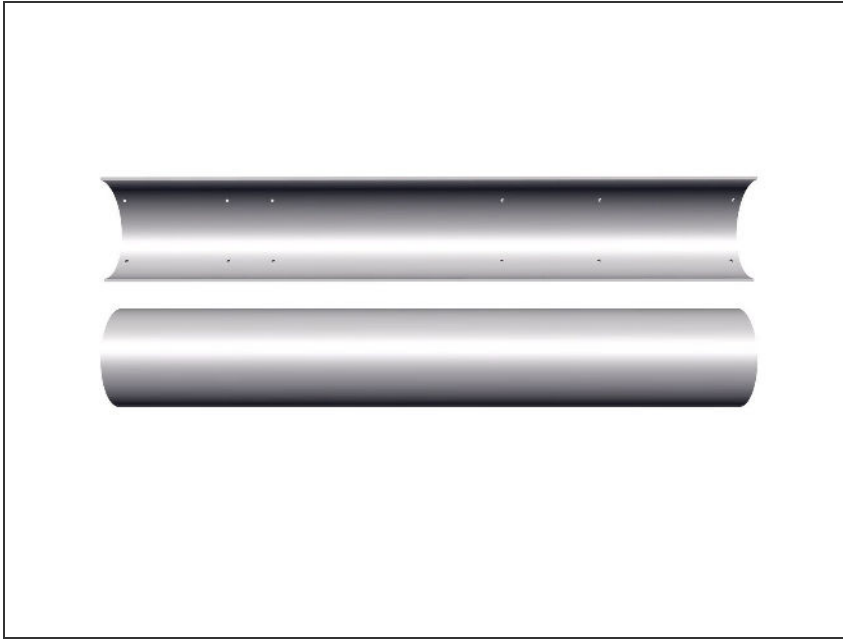
Supplied Components:

Qty Name

- 2 100mm PVC Pipe Halves
- 14 M3 Threaded Insert
- 18 M3 x 8mm Stainless Socket Head Cap Screw
- 5 M3 x 12mm Stainless Socket Head Cap Screw

This guide outlines the parts that come in the kit that are required for the Hull Assembly. Find these parts and put them aside ready for the assembly guides for the Hull.

Step 1 — 100mm PVC Pipe Halves



- 2 x 690mm PVC Pipe Halves are required for the Hull Assembly

Step 2 — M3 Threaded Insert



- 19 x M3 Threaded Inserts are required for the Hull & Buoy Assembly

Step 3 — M3 x 8mm Stainless Socket Head Cap Screw



- 18 x M3 x 8mm Stainless Socket Head Cap Screws are required for the Hull Assembly

Step 4 — M3 x 12mm Stainless Socket Head Cap Screw



- 5 x M3 x 12mm Stainless Socket Head Cap Screws are required for the Hull Assembly