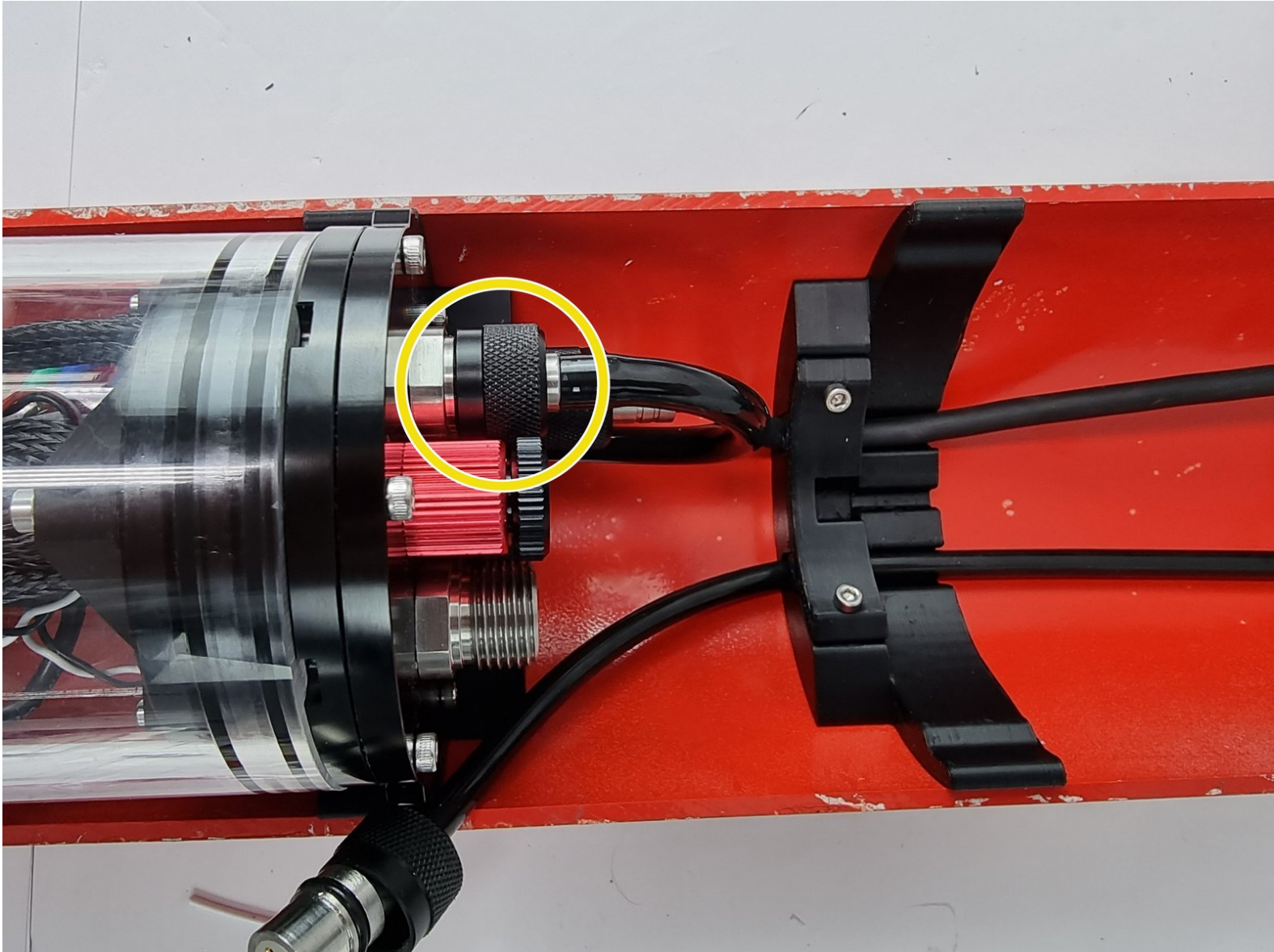


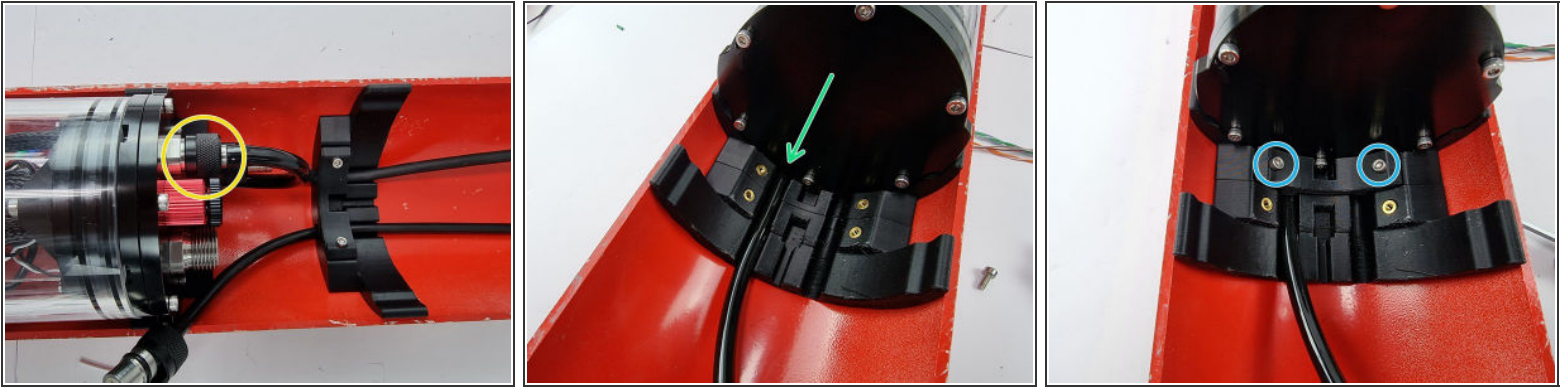


4. Installing Waterproof connector onto servo

Written By: REA



Step 1 — 4. Installing Waterproof connector onto servo



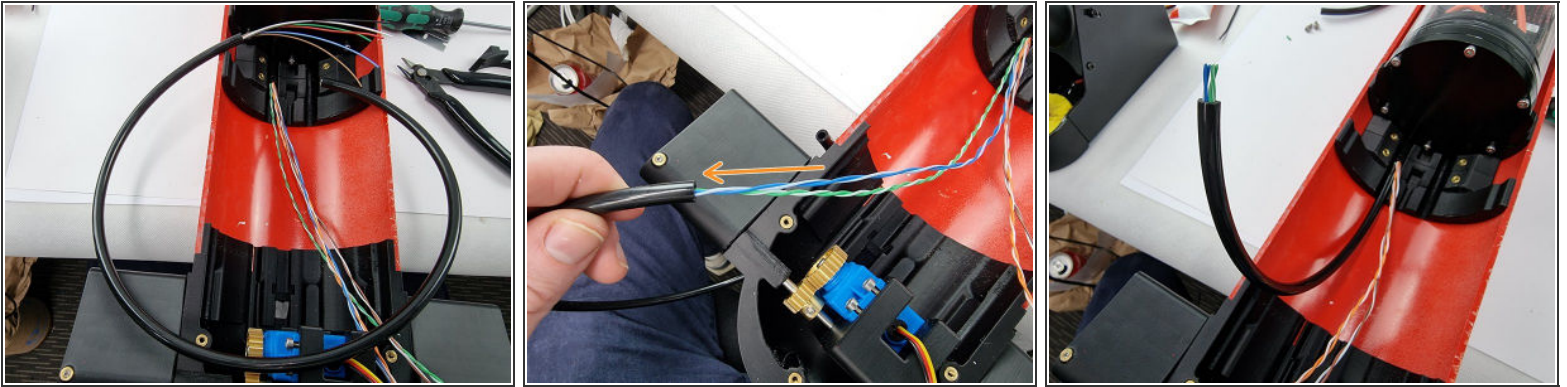
- Insert the 8 Pin connector into the 8 pin bulkhead on the PPM.
- Run the cable under the PPM and place into the cut outs in the hull supports.
- Place the cable cover over the cable and insert the M3x8mm screws to secure it to the hull support

Step 2



- Feed the cable under the fore servo and place it into the groove in the bottom fore cap.
- We need to remove the outside cable cover to allow the wires that will connect to the satellite receiver. Using a pair of cutters cut through the cable cover making sure not to cut any of the wires.
- Slide the cut section of the cable cover away from the wires.

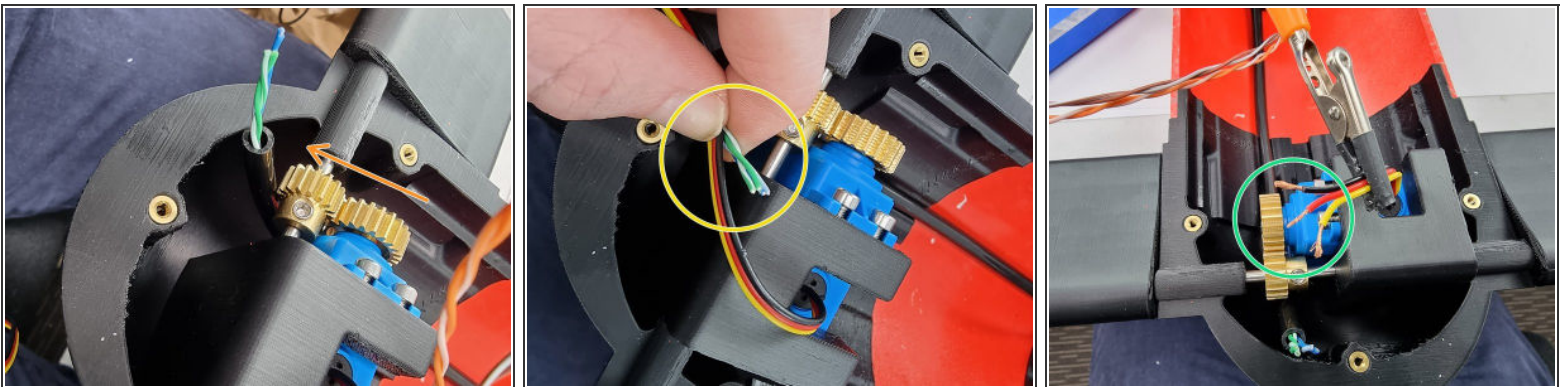
Step 3



⚠ Find the trimmed section of cable from the 6 pin connector. We want to use the cable cover from it to slide over the wires running to the fore servo.

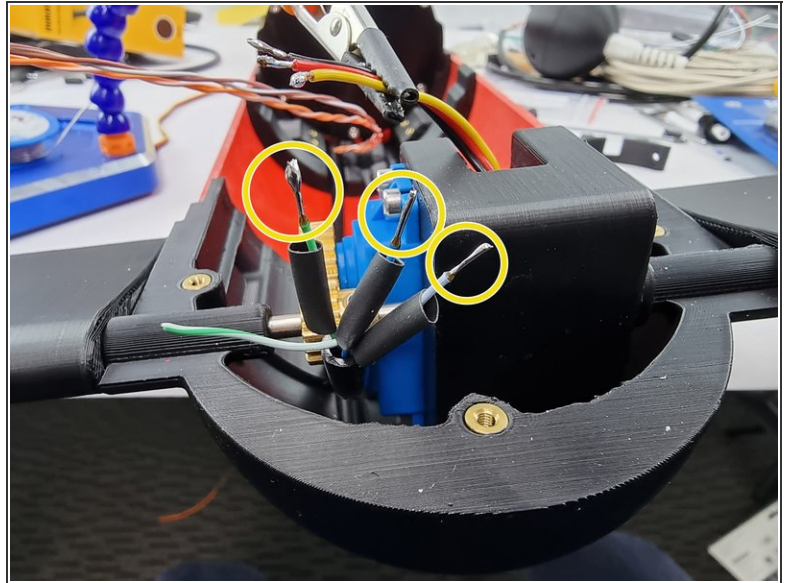
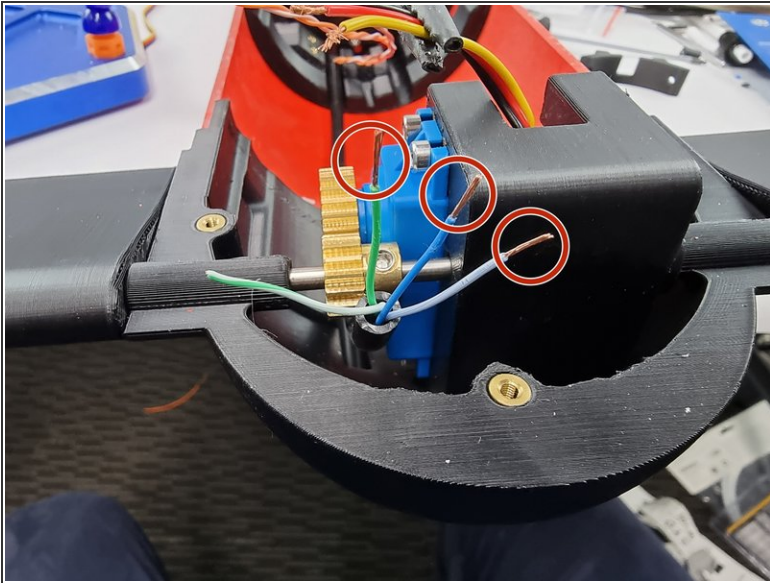
- Trim the cable cover to length and slide it over the wires for the fore servo which are the blue, blue/white, green and green/white wires.

Step 4



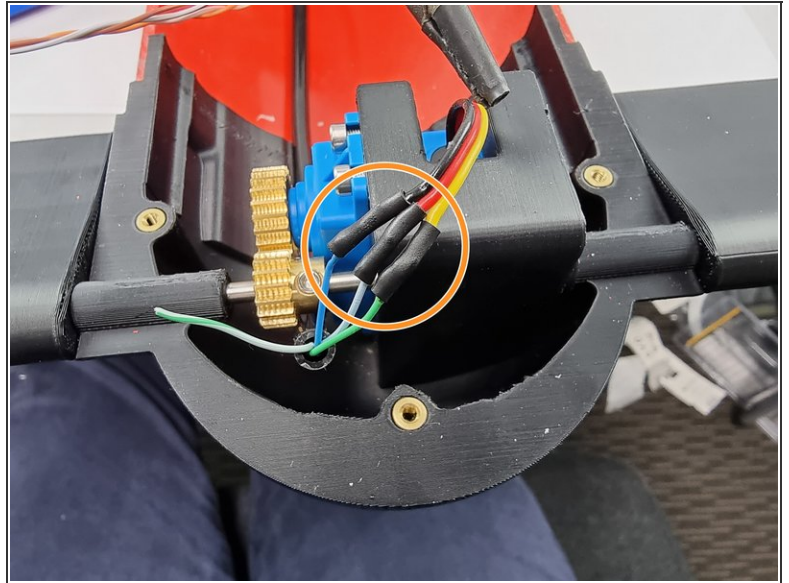
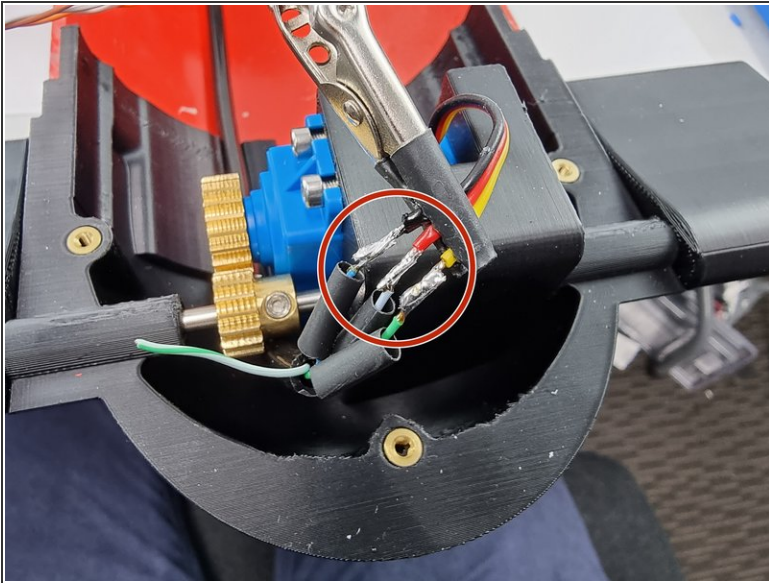
- Feed the cable under the fore control surfaces shaft.
- Position the wires to work out the position to trim the wires from the servo to prepare to join them together.
- Once the wires have been trimmed strip the insulation from the end of the wires.

Step 5



- Strip the insulation from the blue, blue and white and green wires.
- ☞ The Green/White wire is a spare wire that isn't required in the standard setup.
- Tin the tips of the wires and slide a section of heat shrink onto each wire.

Step 6

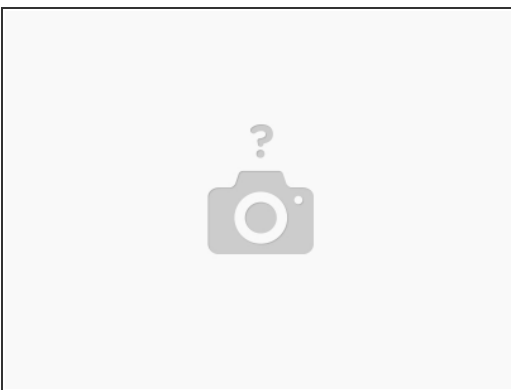


- Solder the wires together in the following matchups.

⚠ Blue wire to Black wire. Blue/White wire to Red Wire and Green Wire to Yellow Wire

- Slide the heat shrink over the soldered joints and apply heat to shrink them into place.

Step 7



- That completes the wiring for the Fore Cap