

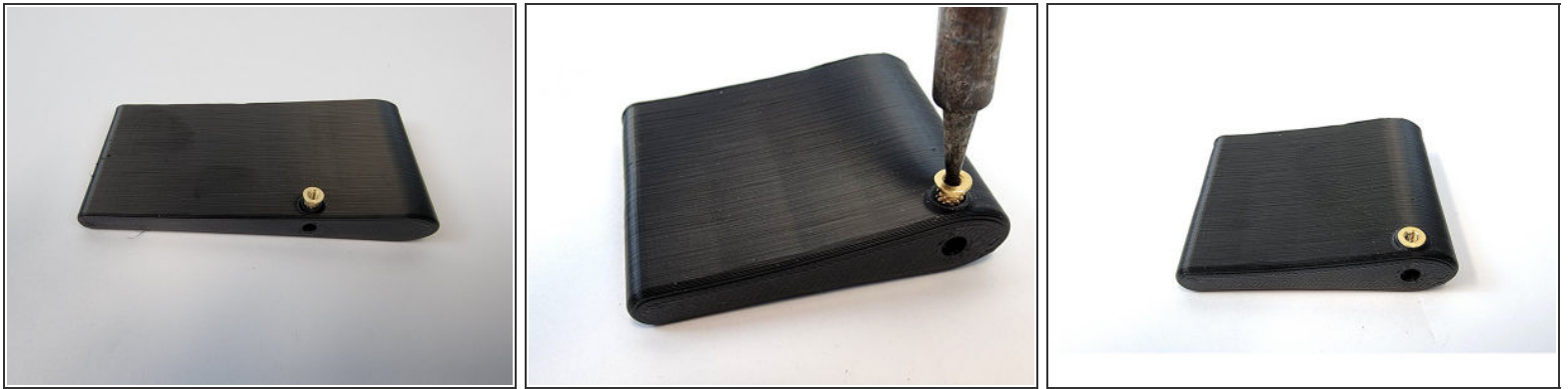


3. Installing Control Surfaces

Written By: REA



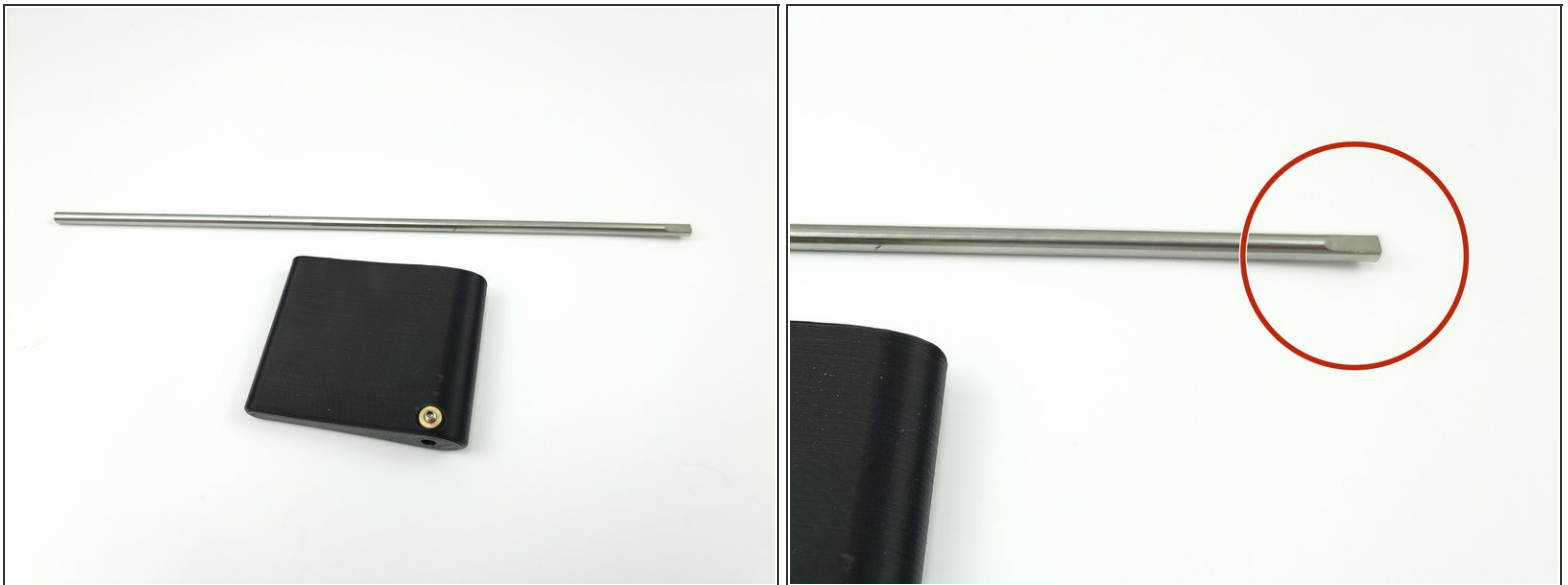
Step 1 — Threaded Inserts



i We need to install the threaded inserts into the 2 short control surfaces and 2 long control surfaces for the Aft Cap

- Heat set the threaded insert into each of the control surfaces using a soldering iron.

Step 2 — Control Rods



- Cut the 4mm Stainless Rod to length. The length for the short control surfaces is 208mm
- Cut another 4mm Stainless Rod for the long control surfaces at a length of 212mm

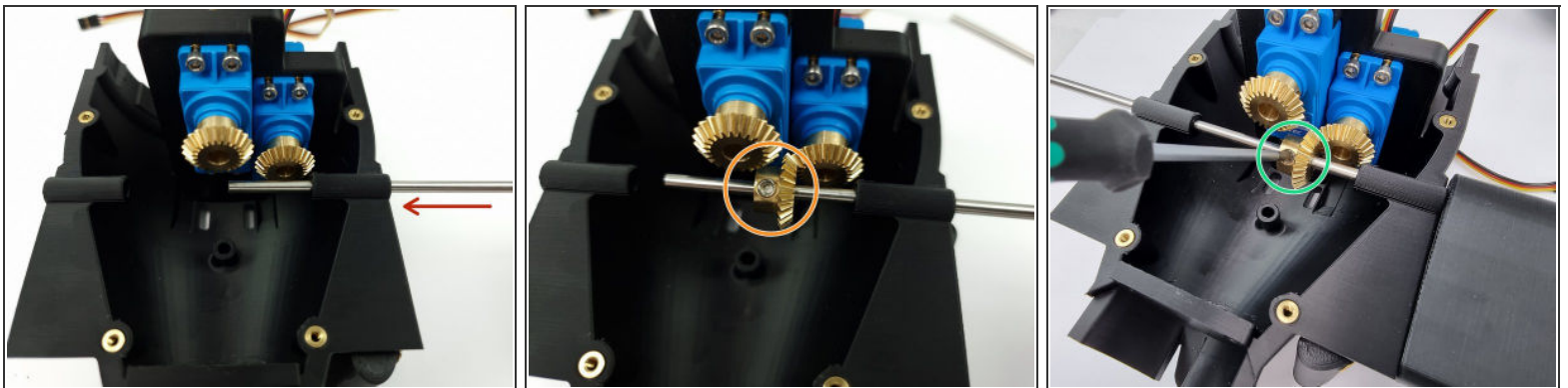
i Optional: You can grind/file a flat onto the control rods to give a better surface for the set screw to screw into holding the control surface in the correct position.

Step 3 — Installing control surface



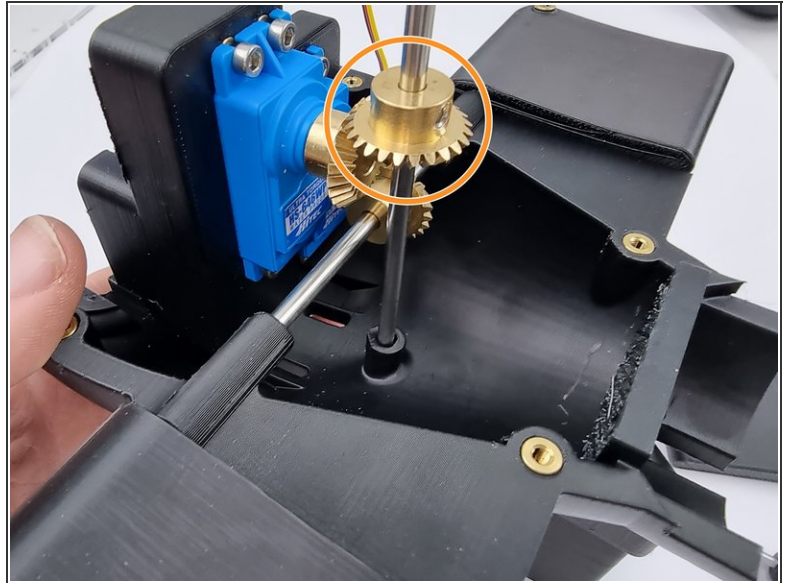
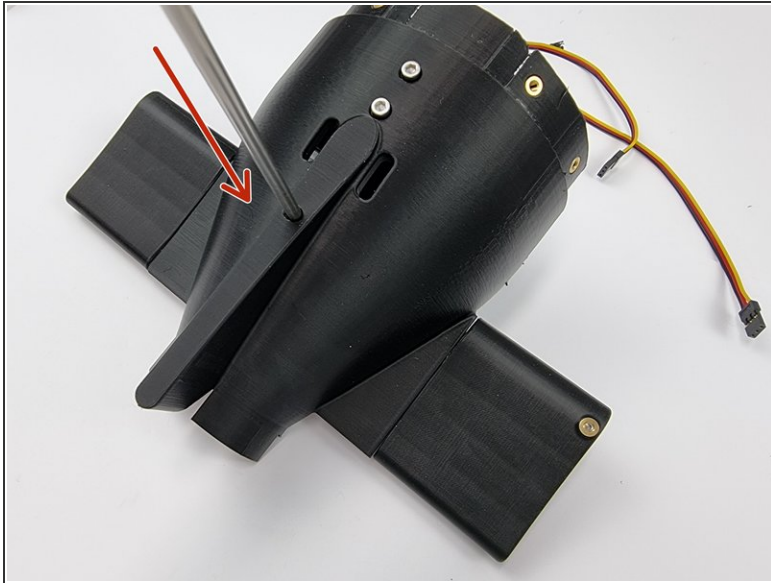
- Install 1 of the short control surfaces onto one end of the 208mm control rod.
- Insert an M3 set screw into the threaded insert and screw it down onto the control rod to fix it in place.
- Ensure the control rod is flush with the end of the control surface.

Step 4 — Insert into Aft Cap



- Slide the Control rod through the first hold of the Bottom Aft Cap.
- Slide the 4mm Bevel gear onto the control rod.
- Now align the 4mm bevel gear with the bevel gear on the servo and fix into place with the set screw on the 4mm bevel gear.
- Once the control has been inserted fully into the Bottom Aft Cap. Install the second control surface and fix into place with an M3 Set Screw

Step 5 — Insert Long Control Surface



- Slide the 212m Control rod through the vertical hole of the Bottom Aft Cap.
- Slide the 4mm Bevel gear onto the control rod.
- Now align the 4mm bevel gear with the bevel gear on the servo and fix into place with the set screw on the 4mm bevel gear.

⚠ Don't install the second long control surface until you have fitted the top aft cap.