



3. Installing Control Surfaces

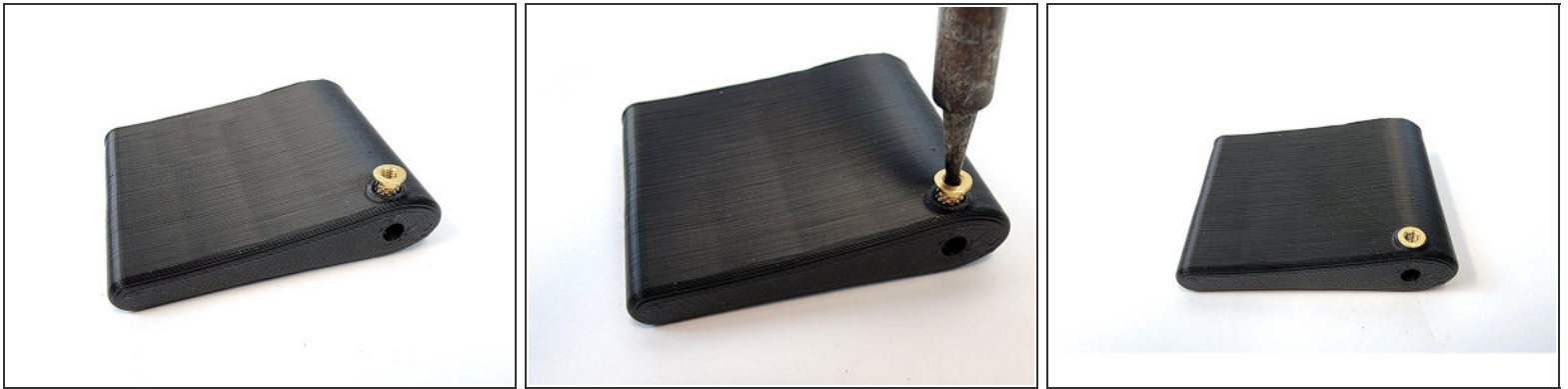
Written By: REA



 **TOOLS:**

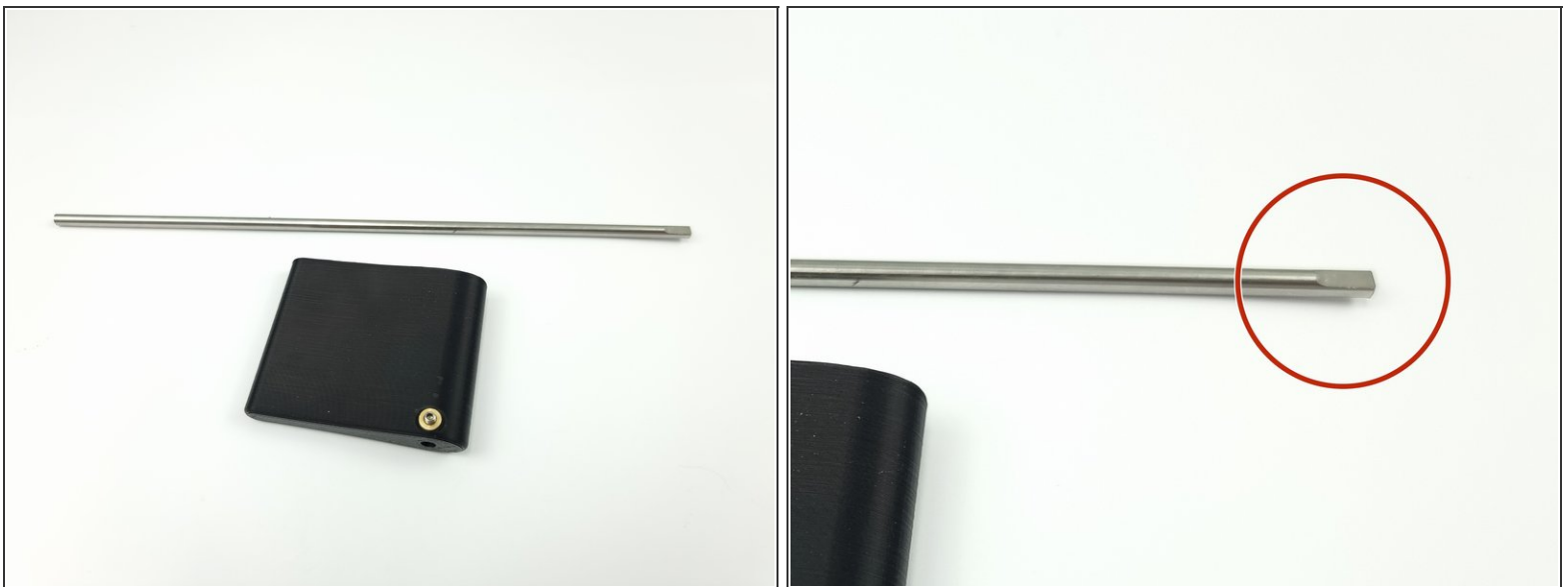
- [Soldering Iron](#) (1)
-

Step 1 — Threaded Inserts



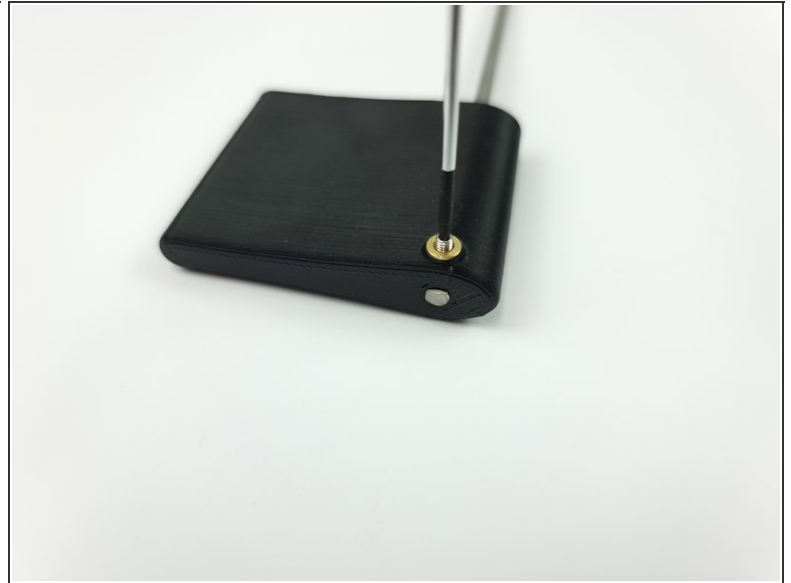
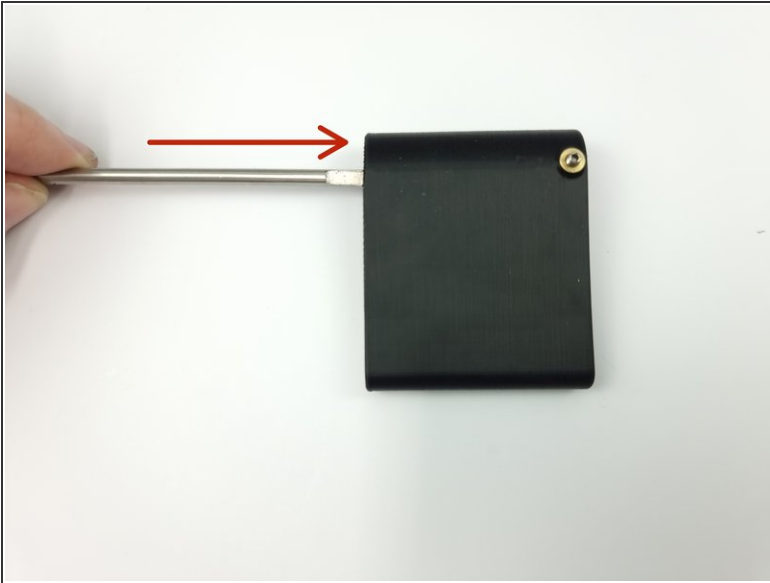
- ⓘ We need to install the threaded inserts into the 2 control surfaces for the Fore Cap
 - Heat set the threaded insert into each of the control surfaces using a soldering iron.

Step 2 — Control Rods



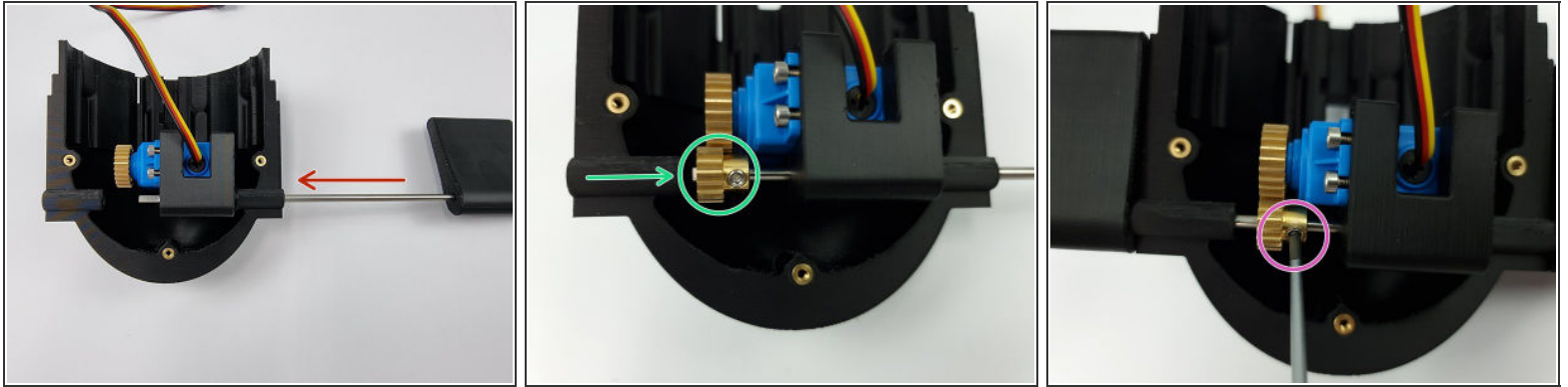
- Cut the 4mm Stainless Rod to length. If using the standard kit the length should be 215mm
- ⓘ Optional: You can grind/file a flat onto the control rods to give a better surface for the set screw to screw into holding the control surface in the correct position.

Step 3 — Installing control surface



- Install 1 of the control surfaces onto one end of the control rod.
- Insert an M3 set screw into the threaded insert and screw it down onto the control rod to fix it in place.
- Ensure the control rod is flush with the end of the control surface.

Step 4 — Insert into Fore Cap



- Slide the Control rod through the hold of the Bottom Fore Cap.
- Slide the 4mm Pinion gear onto the control rod.
- Once the control has been inserted fully into the Bottom Fore Cap. Install the second control surface and fix into place with an M3 Set Screw
- Now align the 4mm Pinion Gear with the Pinion gear on the servo and fix into place with the set screw on the 4mm pinion gear.