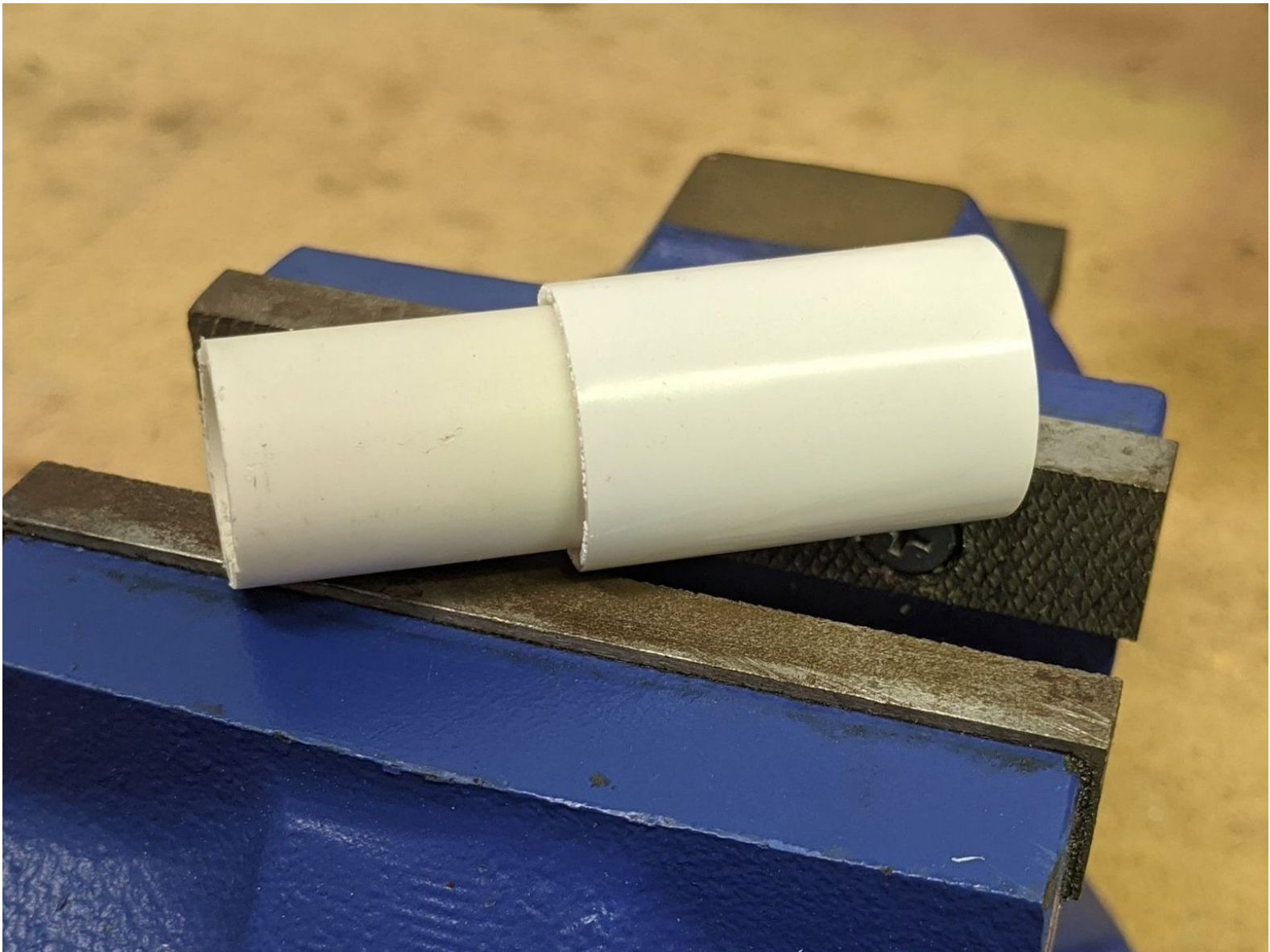




Frame Troubleshooting

Troubleshooting steps to ensure your ROV frame is fully functional.

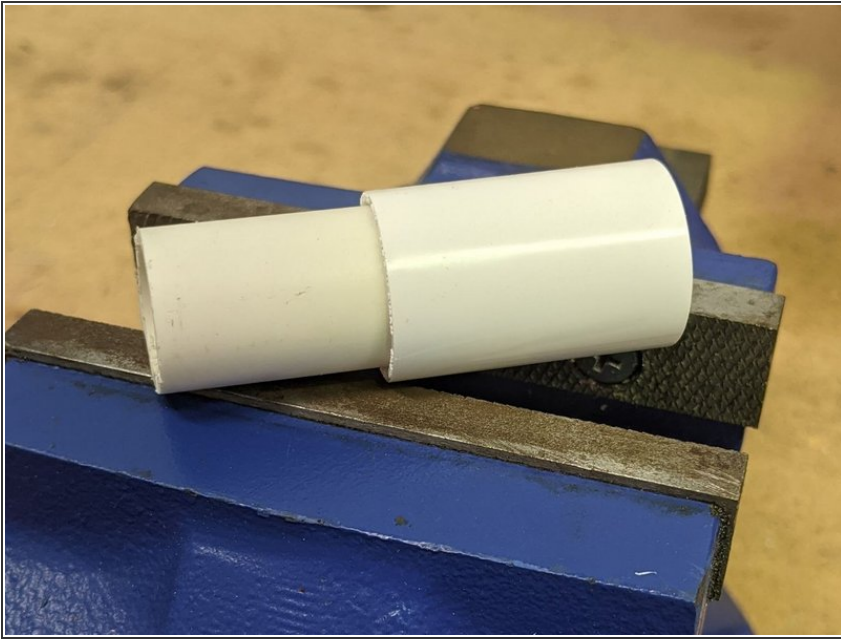
Written By: REA



 **TOOLS:**

- [Power Drill](#) (1)
 - [Screwdriver](#) (1)
-

Step 1 — Frame Issues



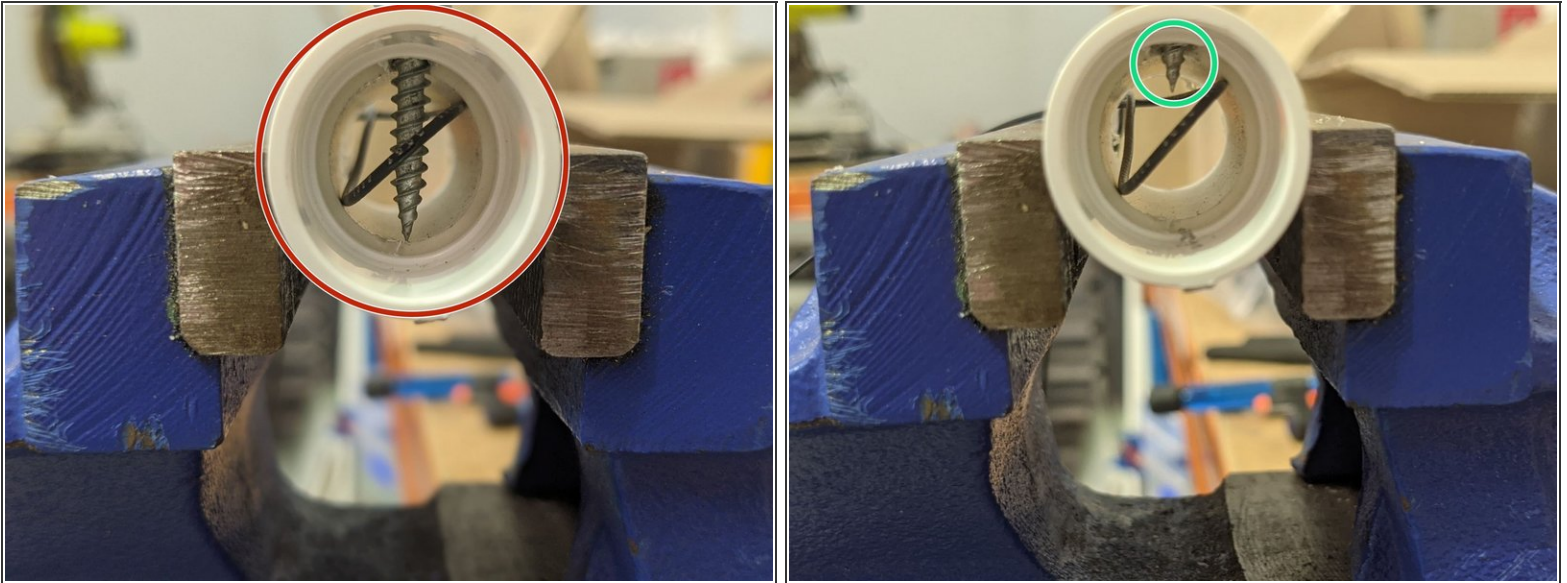
- Sometimes, due to a variety of potential issues, a connection between the pipe and connectors may become loose.
- This may be a result of manufacture error, user modification (e.g sanding / cutting) or, more commonly, the connecting pipe is too short to grip into the tapering joint.

Step 2



- If necessary, you can use a small screw to hold the pipe together instead of PVC glue.
- ⓘ PVC glue makes a connection that is inflexible, brittle and prone to breaking.

Step 3



⚠ If you plan to run the motor wires through the frame (recommended), special caution should be exercised to not use too long of a screw, and avoid using fasteners in the line of the wiring.

Step 4



- To do this, first pre-drill a small hole (smaller than the diameter of the screw).
- ⓘ This will help reduce the stress applied through the frame when the screw is inserted.

Step 5



- Now insert the screw into the pre-drilled hole using a drill or screwdriver.
⚠️ Ensure not to overload the frame, causing a stress fracture.
- Repeat this process for any loose joints across the frame.