



3. Ballast Tank Wiring

Written By: REA

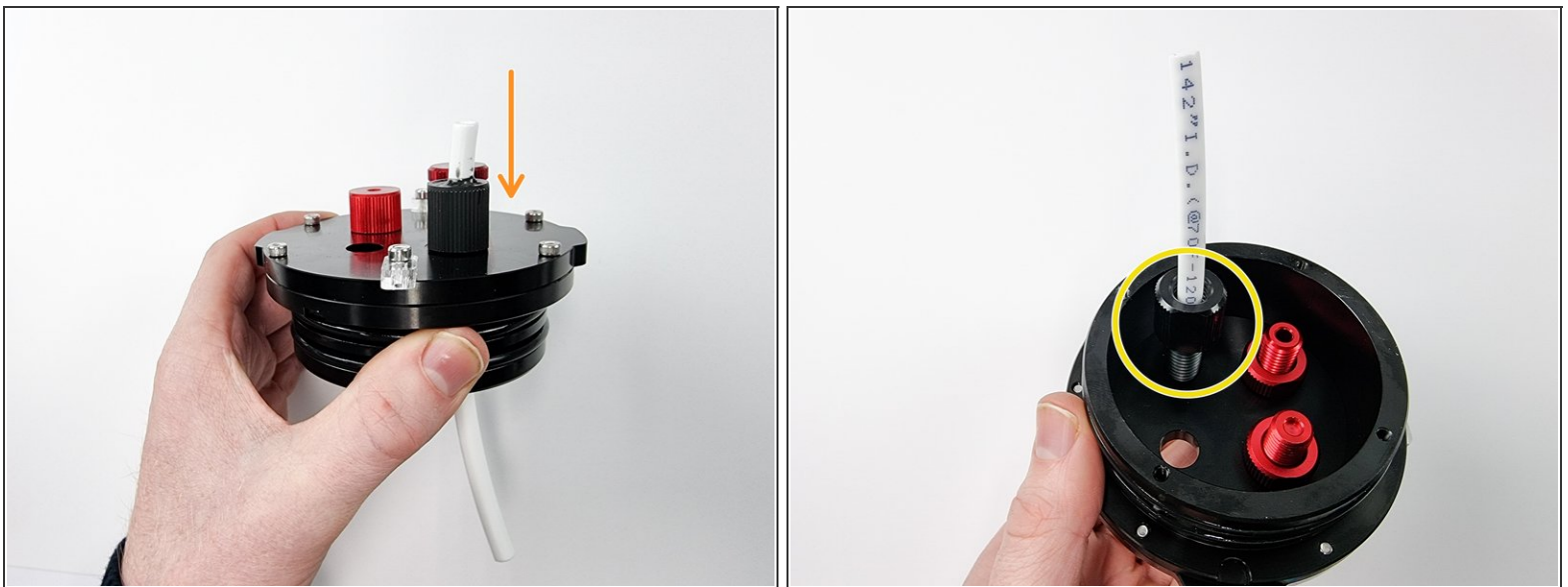


Step 1 — 3. Ballast Tank Wiring



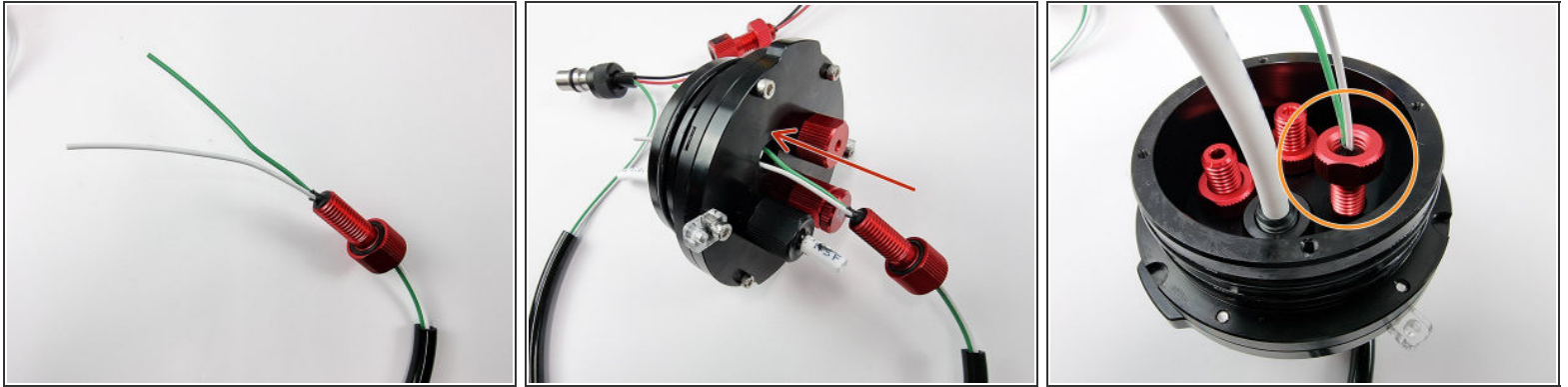
- Grab the end cap and prepare to install the 8mm Penetrator.
- The 8mm Penetrator should have had the rigid tubing potted with the epoxy before installing it.

Step 2



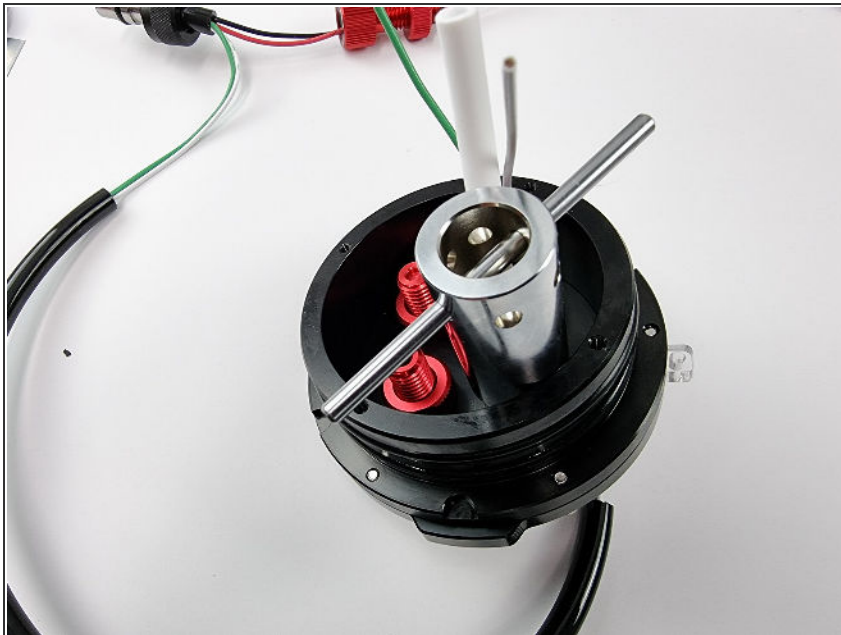
- ⓘ Lubricate the o-ring of the penetrator and place onto the penetrator.
- Insert the penetrator into one of the holes on the end cap.
- Place the nut on the backside of the penetrator and tighten to secure it in place and create a good seal.

Step 3



- Grab the 6mm penetrator that has been potted to the 4 pin cable.
- ⓘ Lubricate the o-ring for the penetrator and install back onto the penetrator.
- Install the penetrator into the remaining hole of the end cap.
- Install the nut onto the back side of the penetrator.

Step 4



- Using the Penetrator wrench tighten the nuts on the back of both the 6mm and 8mm penetrator
- ⚠ Make sure all of the nuts are tight to ensure that it is water tight.

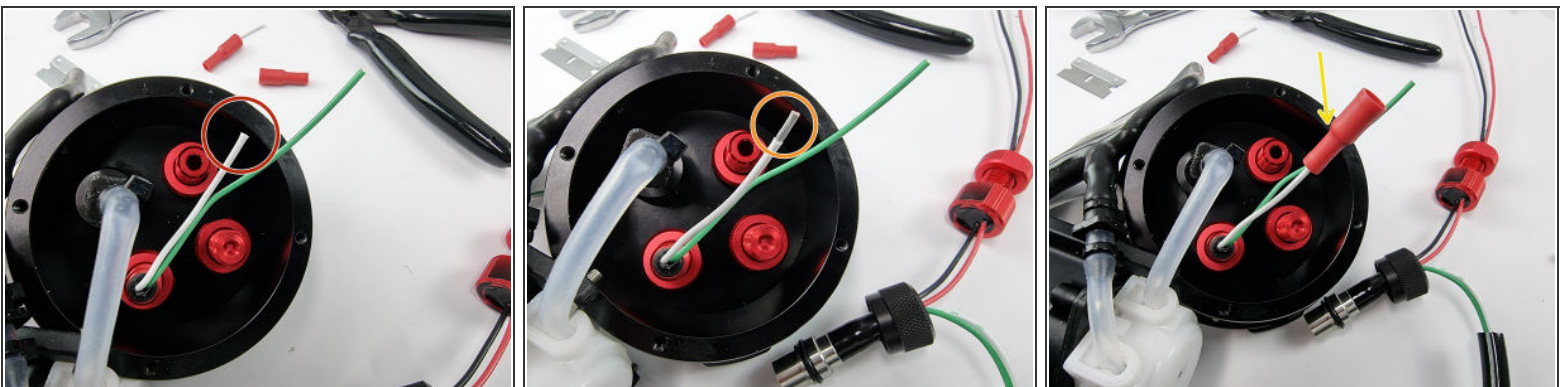
Step 5



- Trim the rigid tubing and insert the 4mm take-off into the tubing.
- Push the silicone tubing from the intake side of the peristaltic pump

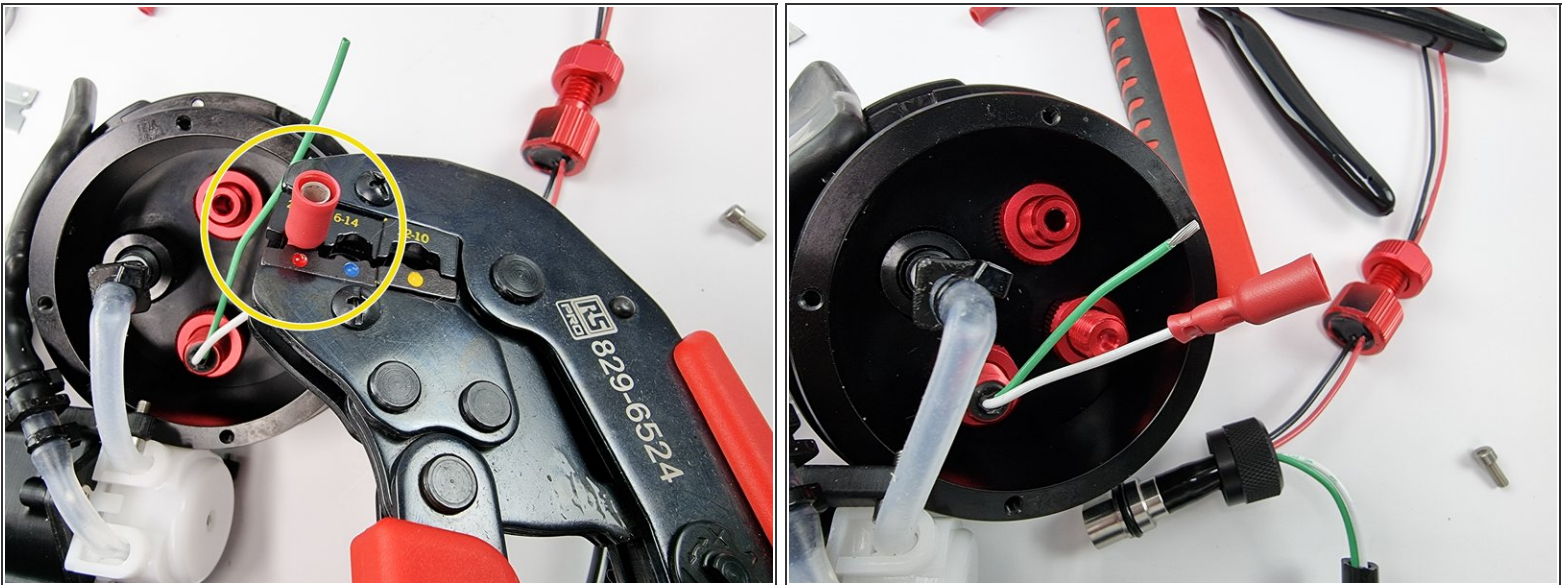
⚠ You can use a small cable tie to secure the hoses to the 4mm Take Off to ensure that they don't come off.

Step 6



- Trim the white wire.
- Strip the insulation from the end of the wire to prepare to install the female bullet connector.
- Slide a female bullet connector onto the white wire.

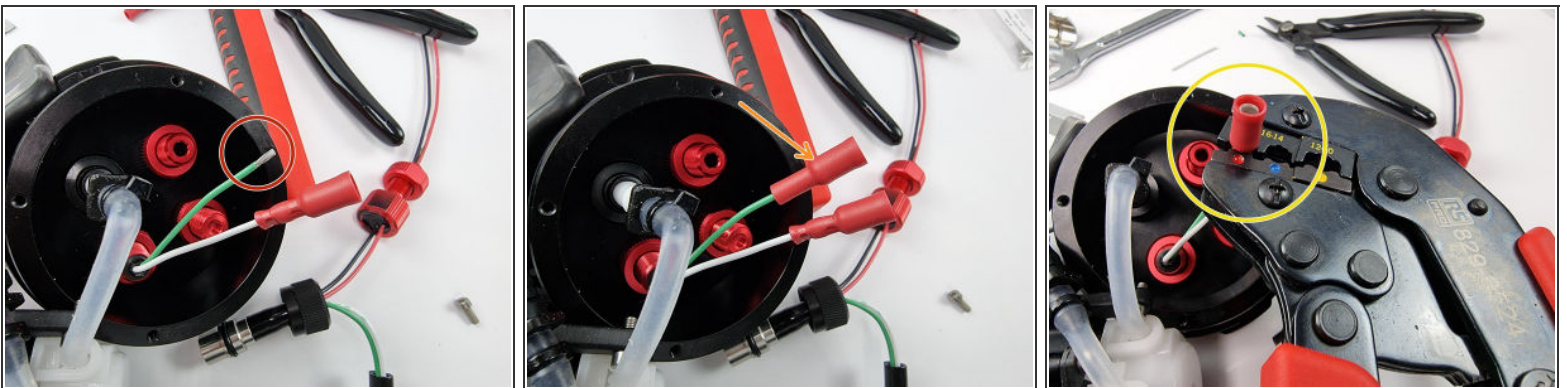
Step 7



- Ensure the female bullet connector is inserted onto the wire correctly and crimp it into place.

⚠ Once crimped give the connector a tug to confirm it has been crimped on securely.

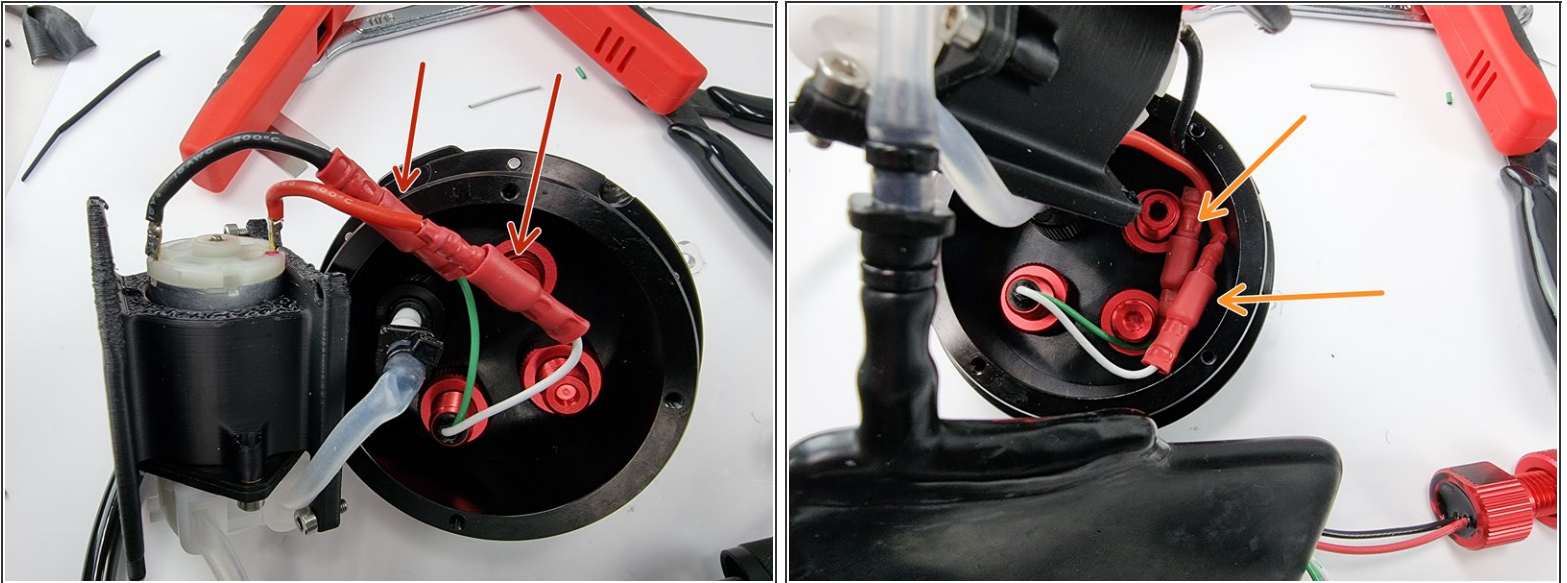
Step 8



- Trim the green wire to length and strip the insulation from the end of the wire.
- Place a female bullet connector onto the green wire.
- Ensure the wire is fully inserted into the female bullet connector and crimp the connector into place.

⚠ Once crimped give the connector a tug to ensure that it was crimped correctly.

Step 9



- Connect the red and white wires together and the black and green wires together.
- Once the bullet connectors have been connected you can push them into the end cap to get them out of the way.

Step 10



- ⓘ Place the peristaltic pump and mount onto the end cap.
- Install 4 x M3x8mm Socket Head Cap Screws to secure the mount onto the end cap.

