



2. Peristaltic Pump Installation

Written By: REA



**TOOLS:**

- Soldering Iron (1)
- Wire Strippers (1)

**PARTS:**

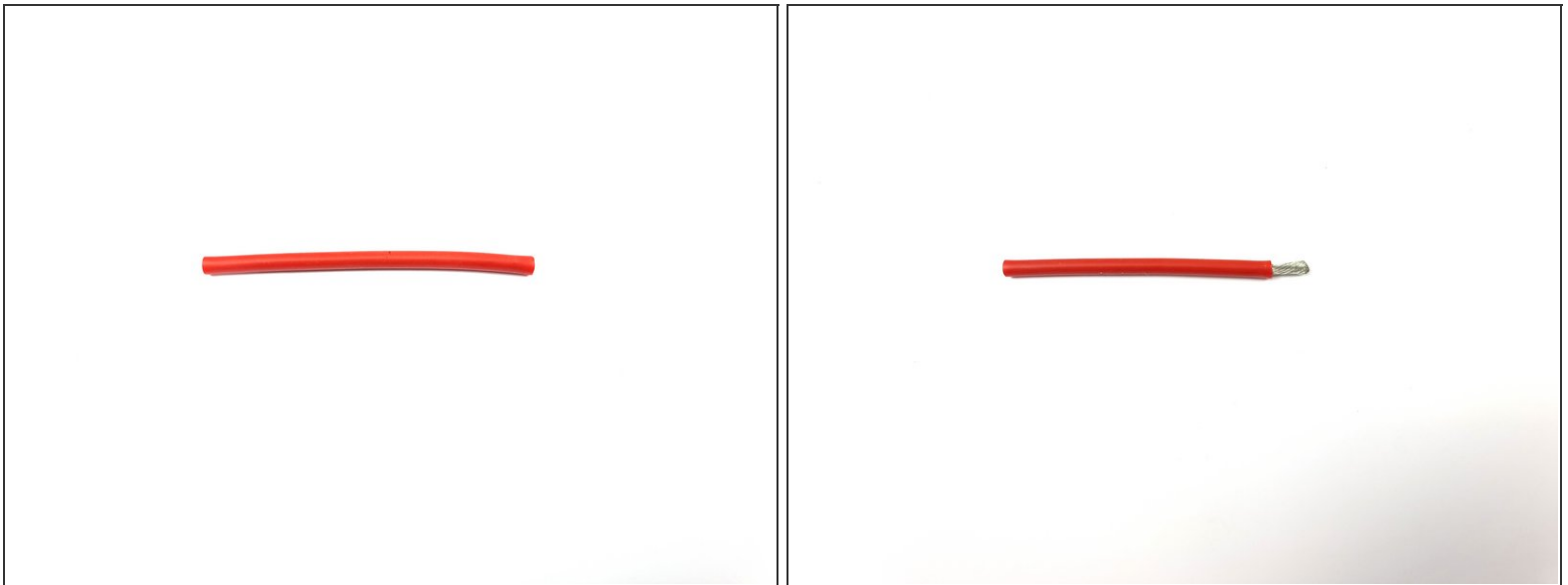
- Peristaltic Pump (1)
- 16awg wire - Red (1)
- 16awg wire - Black (1)
- Male Crimp Connector (2)
- Peristaltic Pump Mount (1)

Step 1 — Prepare Peristaltic Pump



- To fit the Peristaltic Pump into our pump mount we need to remove the steel sleeve with the branding sticker on it
- To remove you twist and slide it off the end of the pump

Step 2 — Positive wire



- Cut a piece of red 14 awg wire to 50mm long
- Strip one end of the wire exposing roughly 6mm of bare wire

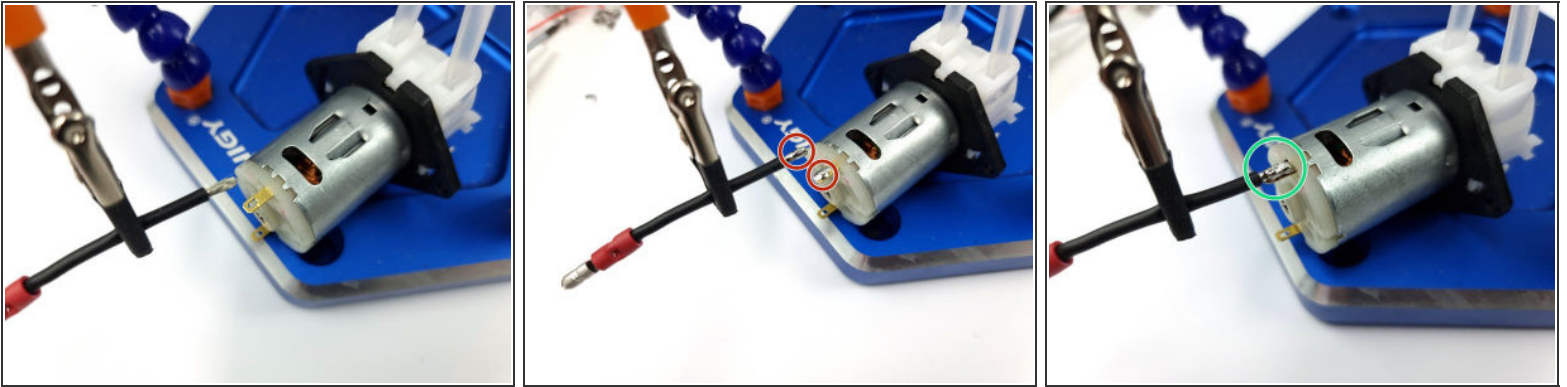
Step 3 — Crimp on connector



- Insert wire into a make bullet connector
- Crimp the connector onto the wire ensuring a tight connection.

 Repeat steps 2 & 3 using the black wire.

Step 4 — Soldering black wire to pump

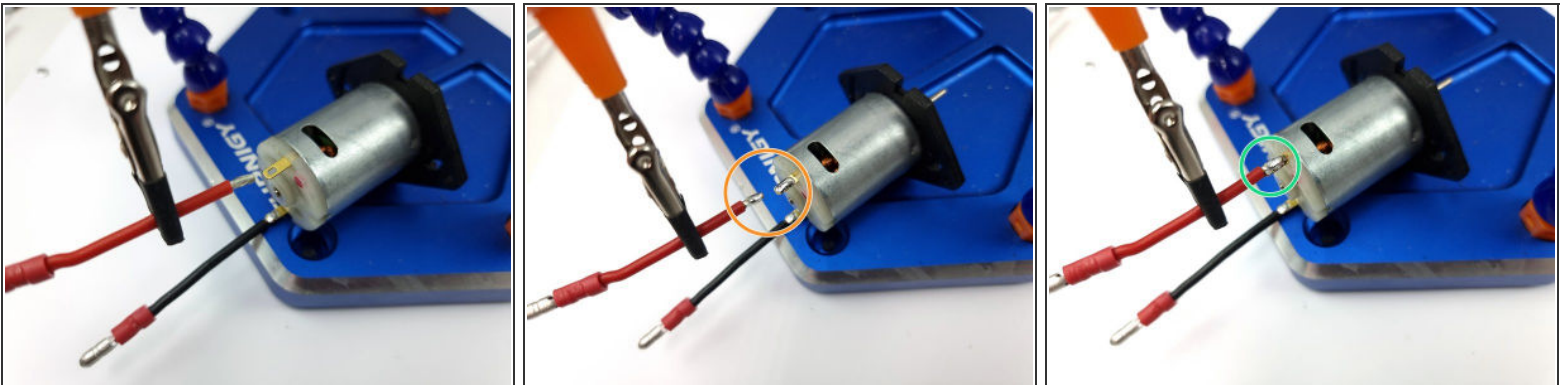


- Using a soldering stand can be helpful to hold the wires in place etc

⚠ The black wire must be soldered to the side opposite the red dot.

- Using a soldering iron add some solder to the wire and also pad of the peristaltic pump.
- Position the wire onto the relevant pad and heat with the soldering iron to join them together.

Step 5 — Soldering red wire to pump

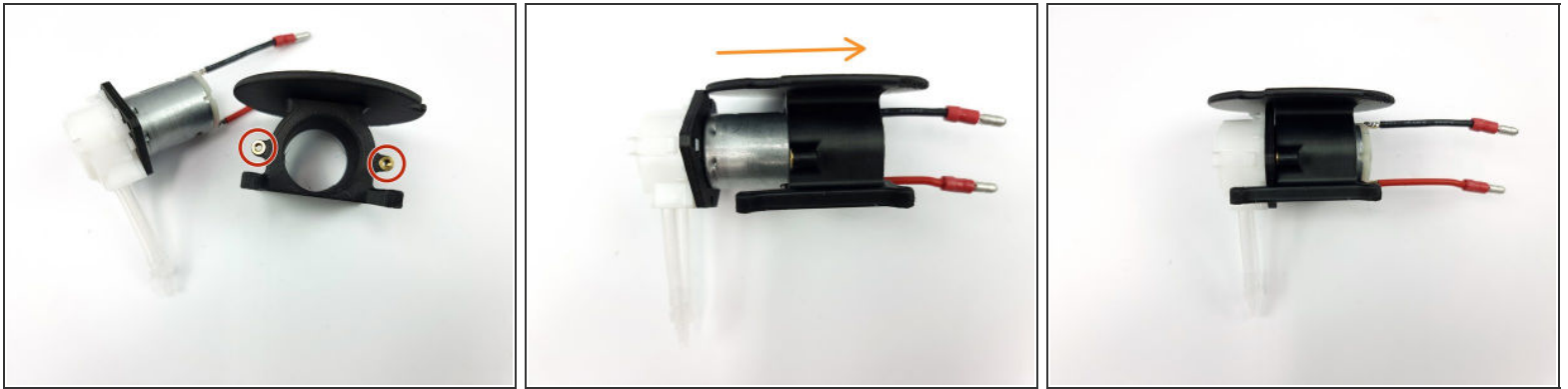


- Using a soldering stand can be helpful to hold the wires in place etc
- Using a soldering iron add some solder to the wire and also pad of the peristaltic pump.

⚠ There is a red dot on the back of the pump that is the positive terminal that we solder the red wire to.

- Position the wire in place on the pad of the pump and heat with the soldering iron to join them together

Step 6 — Install pump into mount



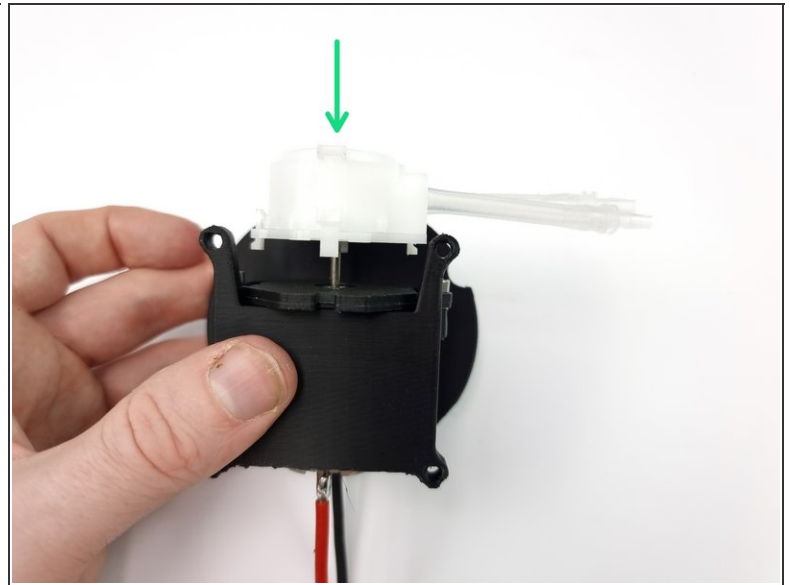
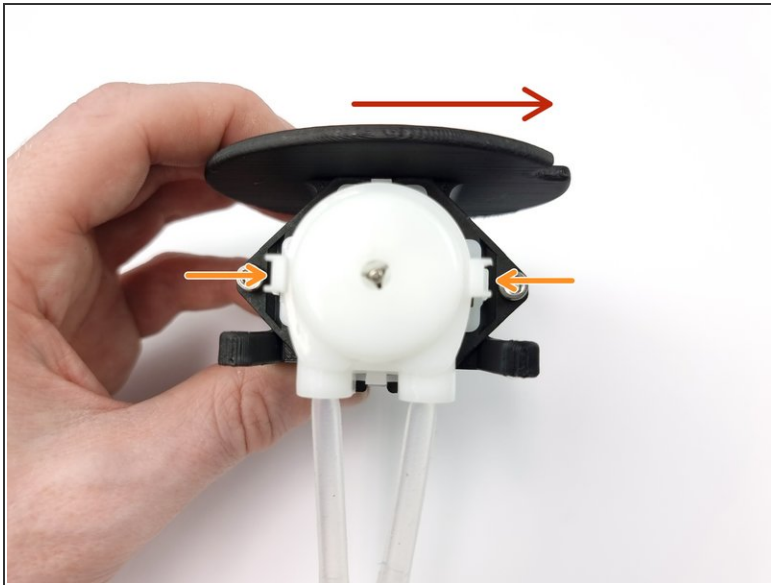
- Prepare the peristaltic pump mount and install the threaded insert if they haven't been inserted already.
- Feed the wires into the hole of the mount and slide the pump into the mount.

Step 7 — Install the screws



- Insert 2 x M3x8mm Screws to fix the pump to the mount
- Using a 2.5mm allen key tighten the 2 screws

Step 8 — Rotate Pump Head



- We need to rotate the head of the pump so the tubes come out on the righthand side
- To remove head from the pump squeeze the 2 tabs on the side of the pumps in and pull the head away from the pump.
- Place the head back on in the correct orientation and push down until you hear a click.