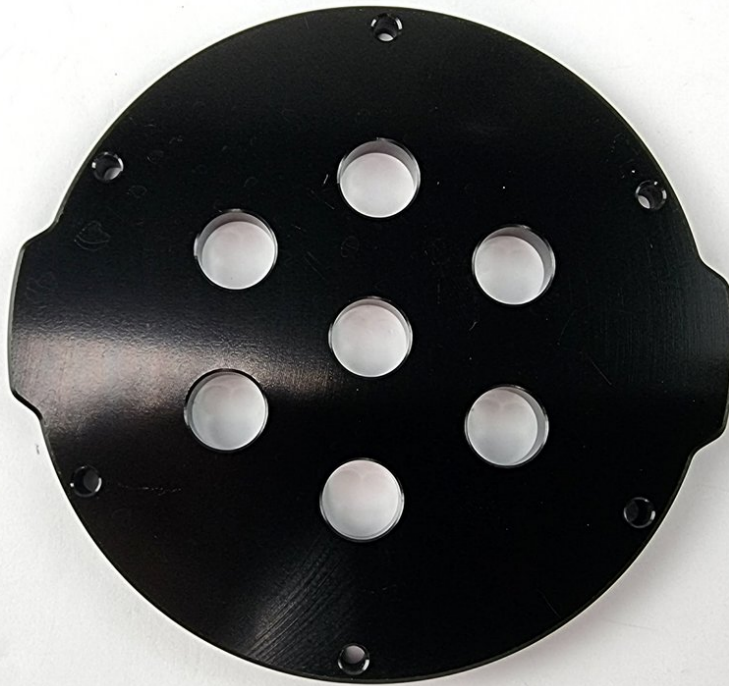




2. End Cap Setup

Written By: REA



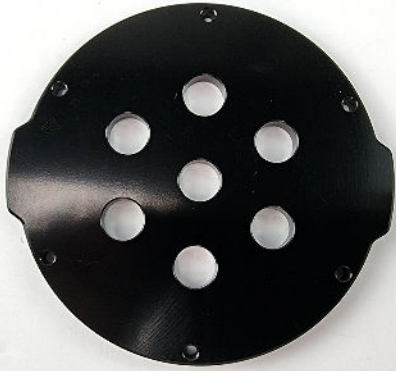
**TOOLS:**

- [Penetrator Wrench](#) (1)
- [17mm Spanner](#) (1)
- [2.5mm Hex Key](#) (1)

**PARTS:**

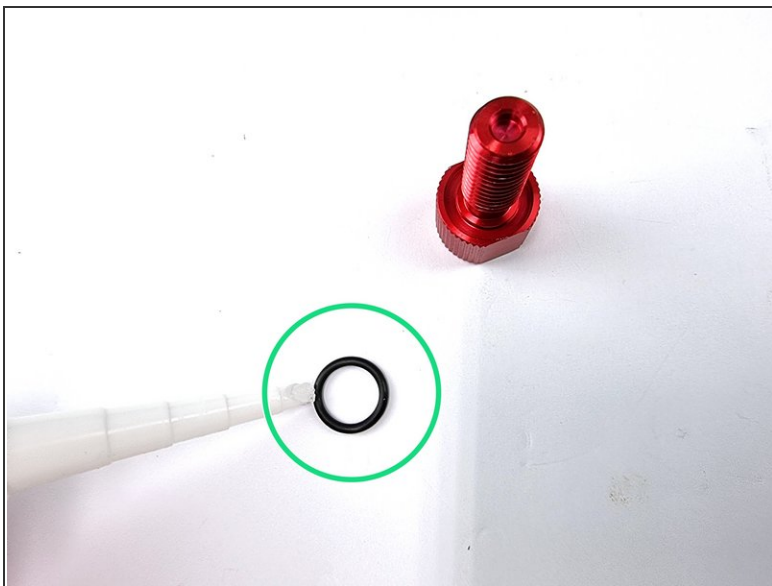
- [7 Hole End Cap](#) (1)
- [O-Ring Flange](#) (1)
- [Penetrator Blank](#) (1)
- [Vent & Plug](#) (1)
- [Power Switch](#) (1)
- [3 Pin Bulkhead Connector](#) (1)
- [4 Pin Bulkhead Connector](#) (1)
- [6 Pin Bulkhead Connector](#) (1)
- [8 Pin Bulkhead Connector](#) (1)

Step 1 — 7 Hole End Cap



- Grab the 7 hole end cap from the kit and unwrap it from the bubble wrap pouch

Step 2 — Penetrator Blank



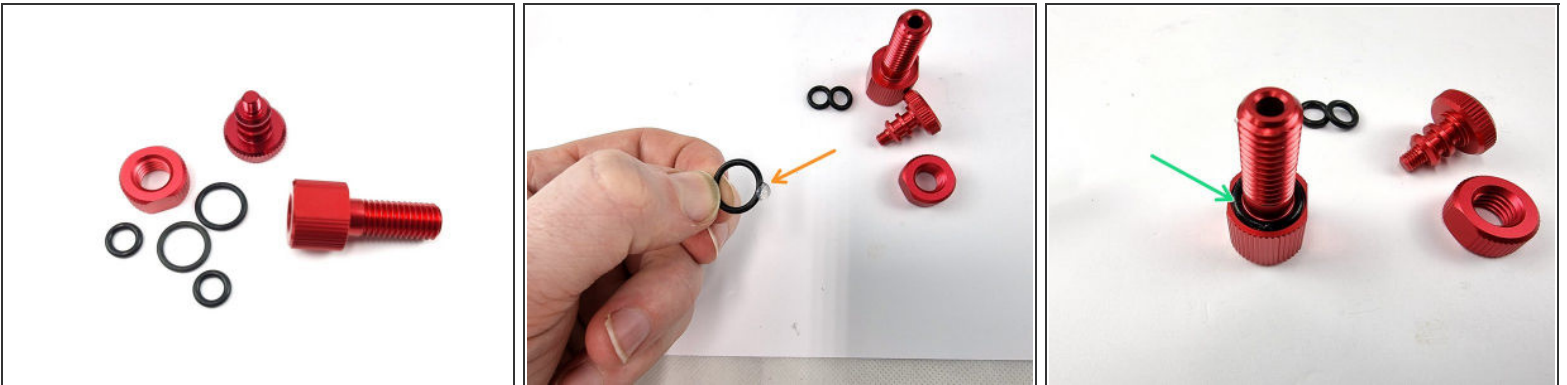
- Grab one of the Penetrator blanks
- Lubricate the O-ring with silicone grease
- Install the O-ring onto the Penetrator

Step 3



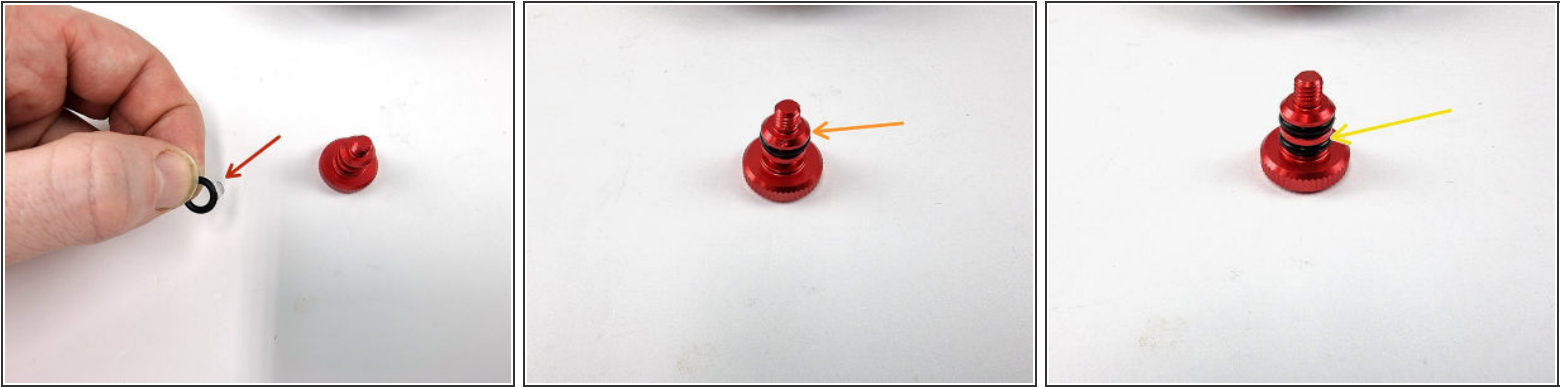
- Insert the Penetrator Blank in the centre hole of the end cap
- Screw on the nut on the backside of the penetrator blank
- Using a spanner and penetrator wrench tighten the nut onto the penetrator blank

Step 4



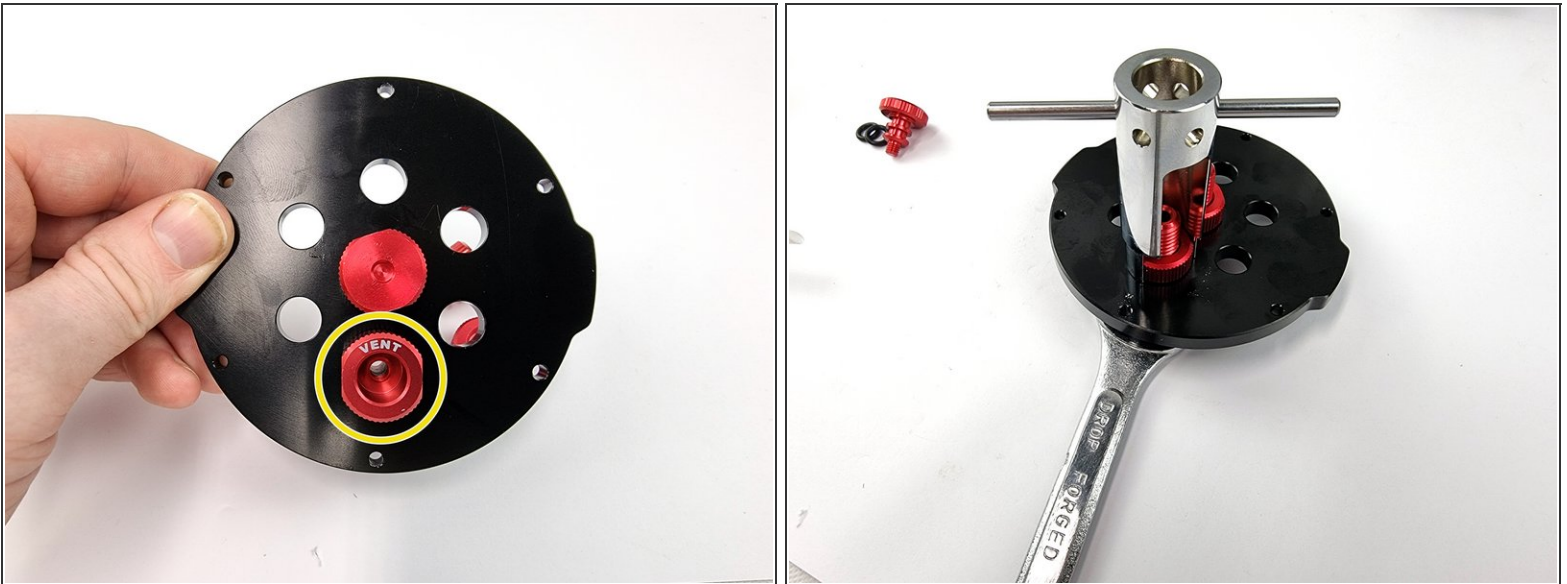
- Locate a vent and plug and remove it from its plastic bag
- Lubricate the large O-ring with silicone grease
- Install the O-ring onto the penetrator

Step 5



- Lubricate the 2 small O-rings with silicone grease
- Install the first O-ring onto the plug
- Install the second O-ring onto the plug

Step 6



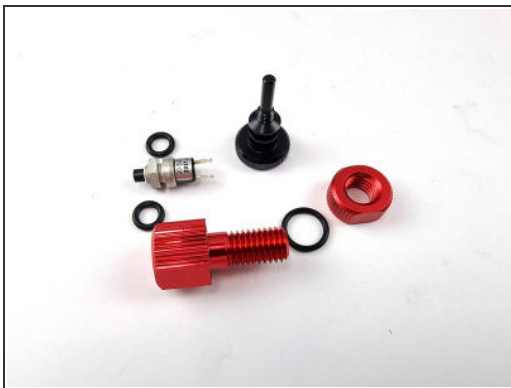
- Insert the vent penetrator into the bottom hole of the end cap
- Install the nut on the back side and tighten with a spanner and penetrator wrench

Step 7



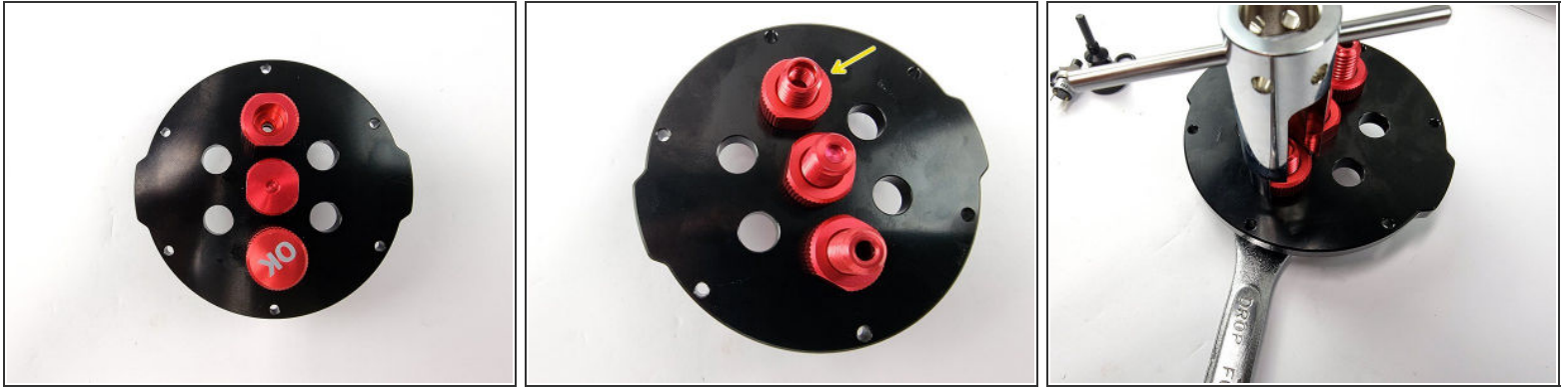
- Insert the plug into the penetrator.
- Push the plug down and then screw it in all the way down to make sure of a good seal

Step 8



- Find and unpack the power switch
- Lubricate the large O-ring with silicone grease
- Install the O-ring onto the power switch penetrator.

Step 9



- Install the power switch penetrator into the top hole of the end cap
- Screw the nut onto the back of the penetrator
- Using a spanner and penetrator wrench tighten the nut onto the penetrator

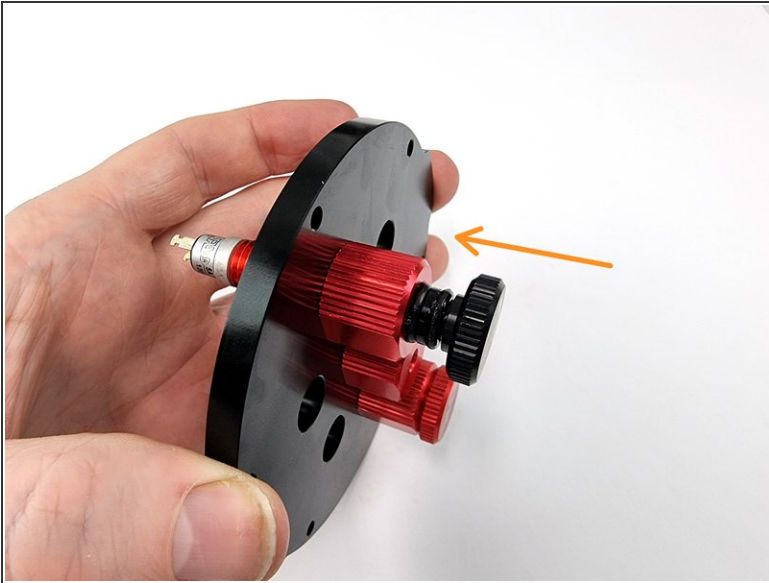
Step 10



- Grab the push button switch included with the power switch
- Unscrew the nut from the switch as this isn't required for our installation
- Screw the push button switch into the back of the power switch penetrator

Step 11

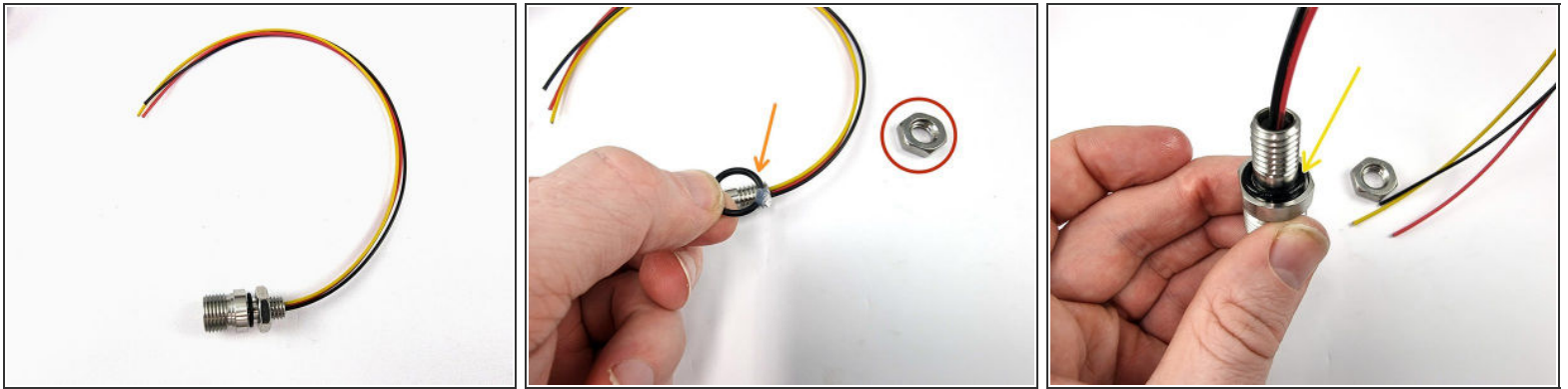
- Lubricate the 2 small o-rings with silicone grease
- Fit the first o-ring into the first groove on the power switch plunge bolt
- Fit the second o-ring into the second groove on the power switch plunge bolt

Step 12

- Insert the plunge bolt into the penetrator
- Push it in past the 2 o-rings and screw it in. don't screw it all the way in as that will activate the power button.

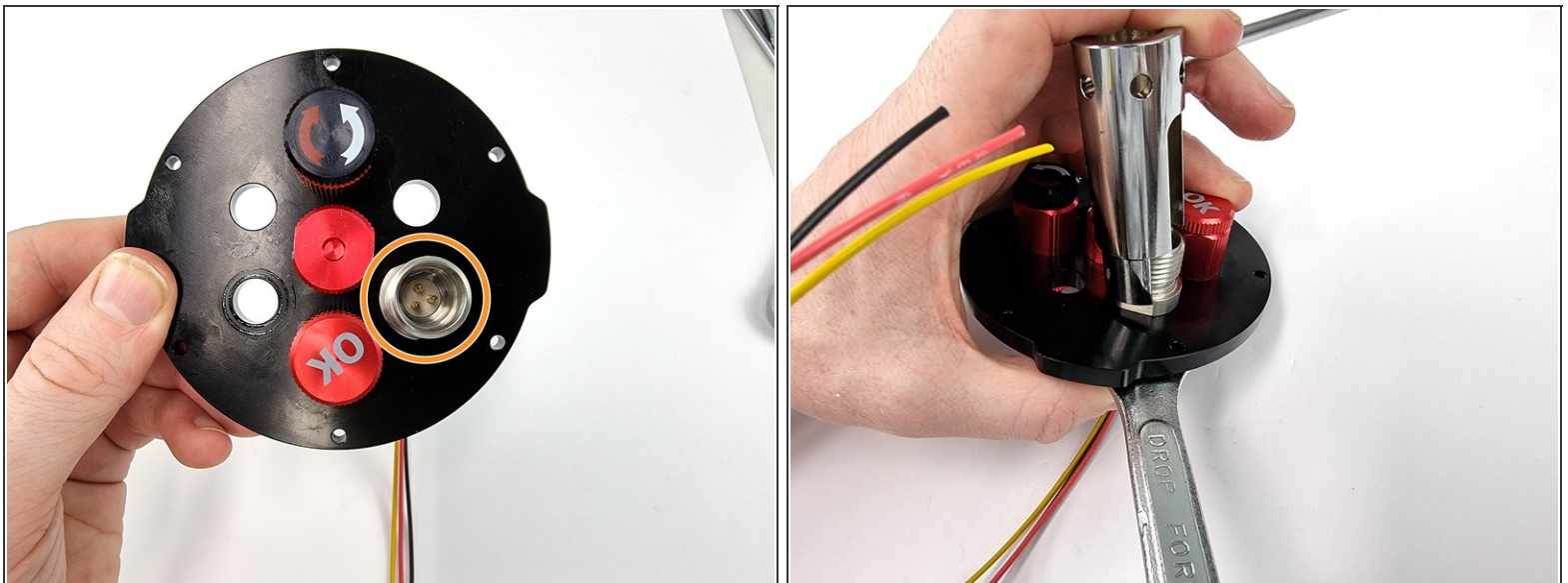
⚠ This is the on/off power switch for the whole Submarine. Screwing it in will push the button in turning the Submarine on and unscrewing it will turn the Submarine off.

Step 13



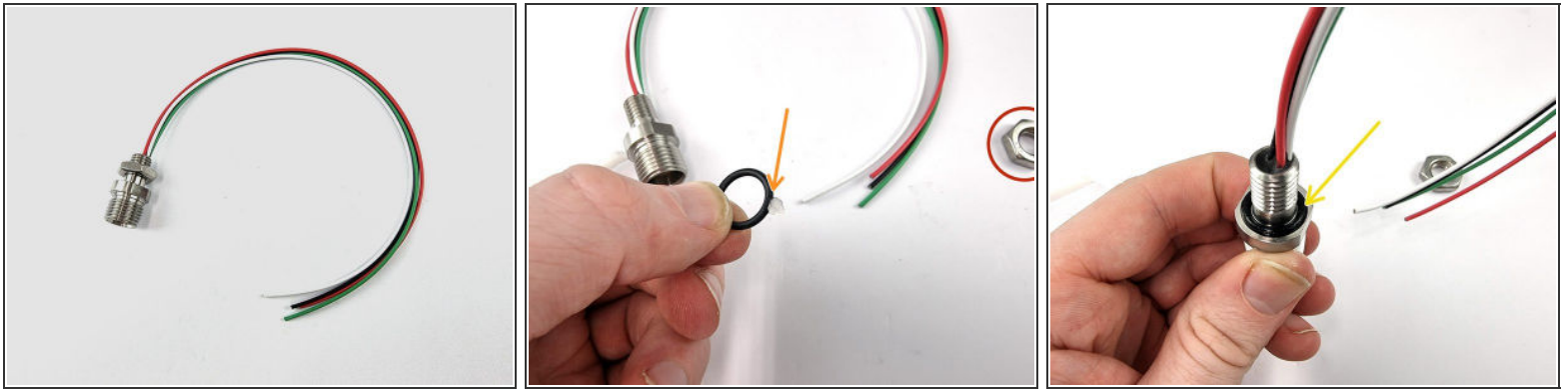
- Locate and unpack the 3 pin bulkhead connector
- Remove the nut and the o-ring from the bulkhead connector
- Lubricate the o-ring with silicone grease
- Install the o-ring back onto the bulkhead connector

Step 14



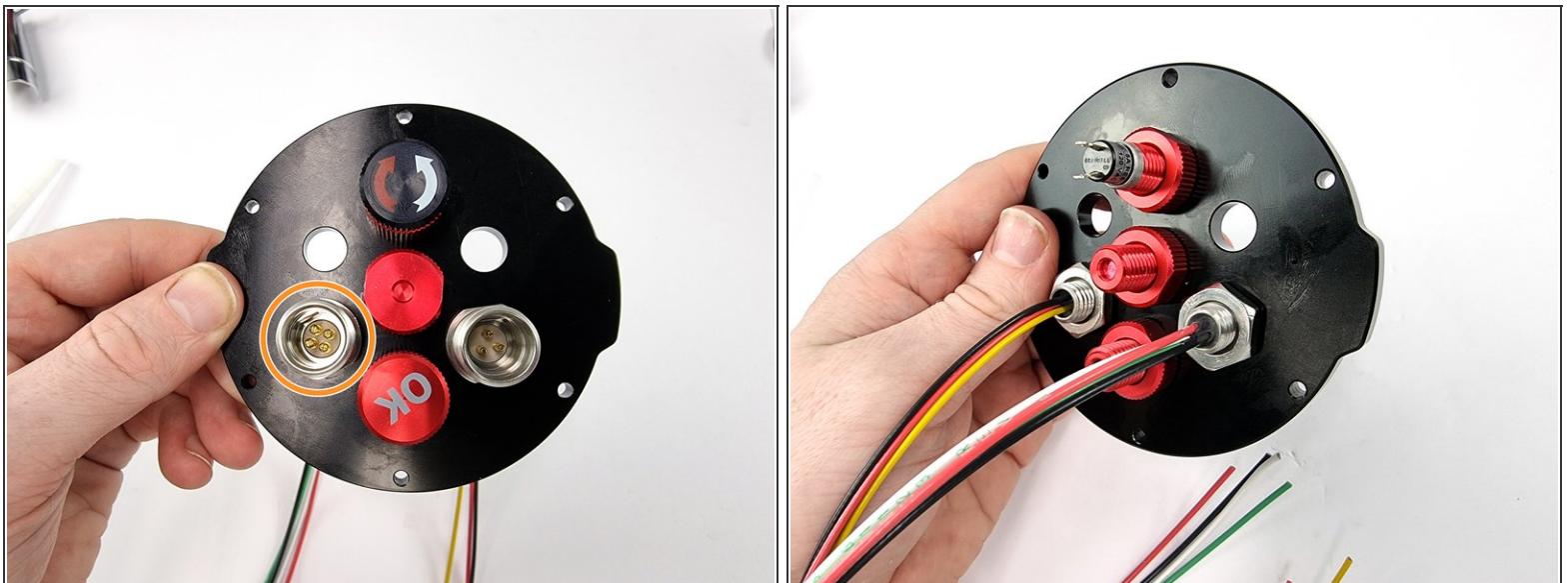
- Install the 3 pin bulkhead connector in the bottom right hole of the end cap
- Install the nut on the back side of the bulkhead connector and tighten with the penetrator wrench and a 17mm spanner

Step 15

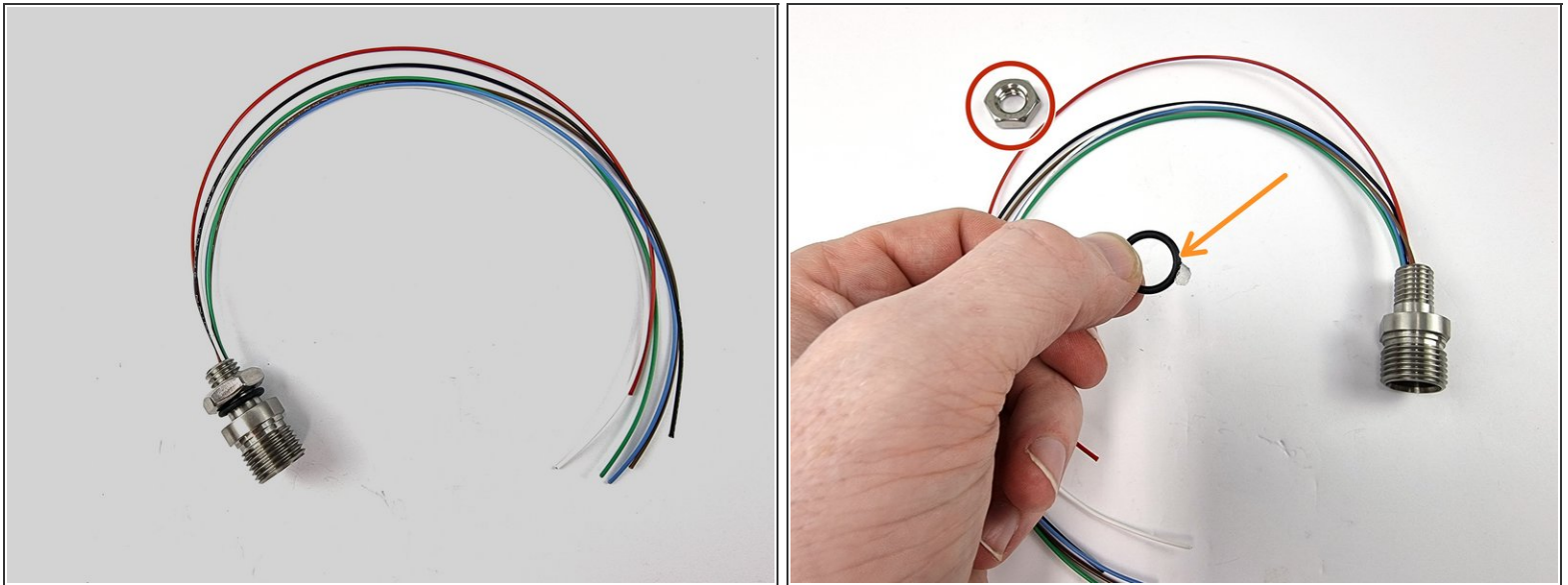


- Locate and unpack the 4 pin bulkhead connector
- Remove the nut and the o-ring from the bulkhead connector
- Lubricate the o-ring with silicone grease
- Install the o-ring back onto the bulkhead connector

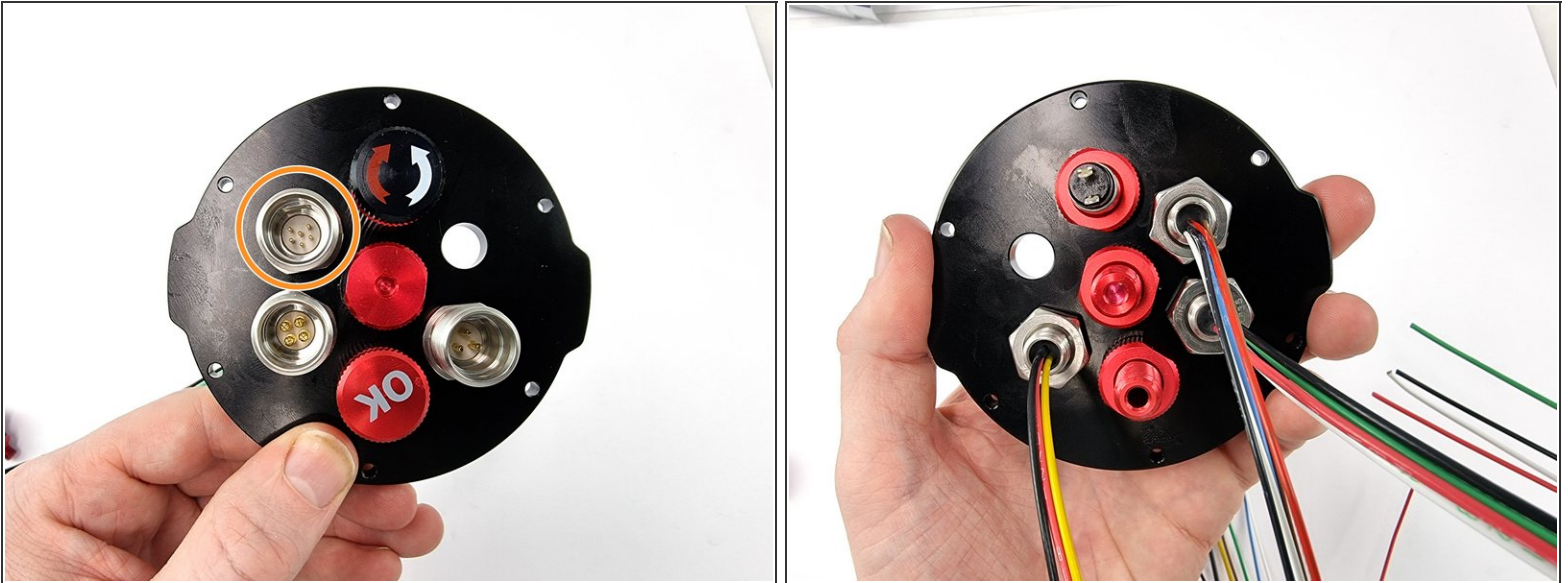
Step 16



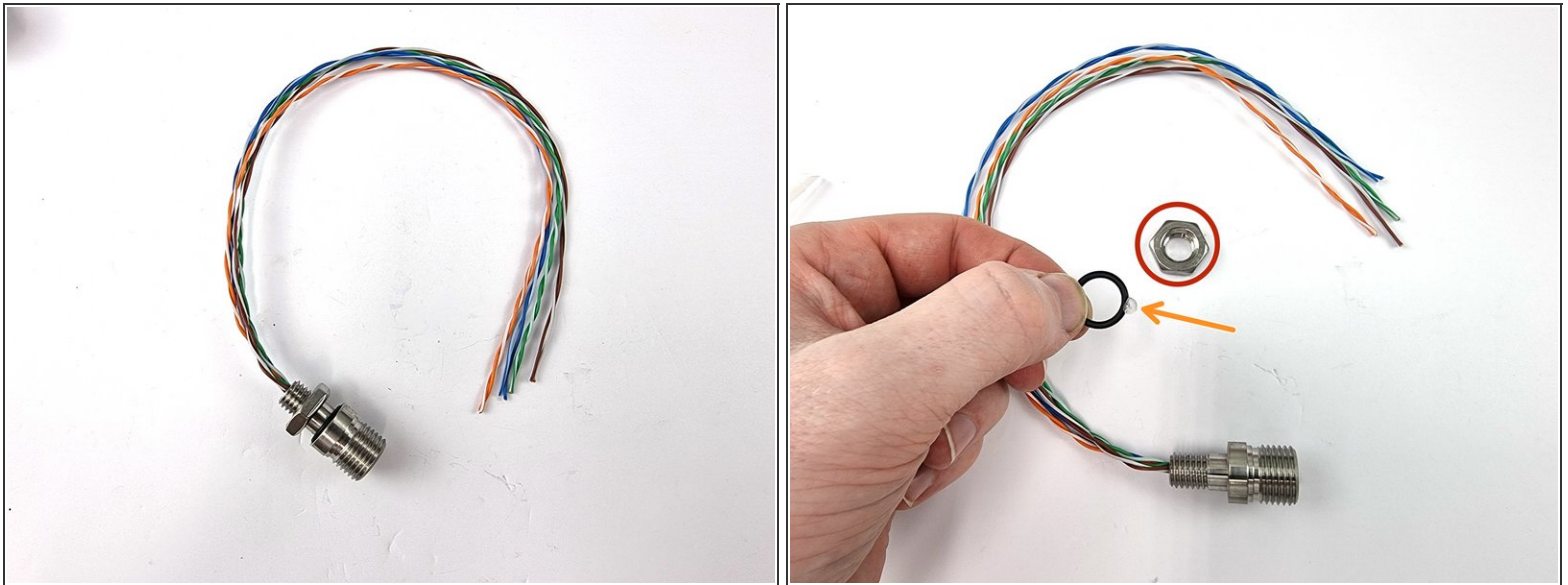
- Install the 4 pin bulkhead connector in the bottom left hole of the end cap
- Install the nut on the back side of the bulkhead connector and tighten with the penetrator wrench and a 17mm spanner

Step 17

- Locate and unpack the 6 pin bulkhead connector
- Remove the nut and the o-ring from the bulkhead connector
- Lubricate the o-ring with silicone grease
- Install the o-ring back onto the bulkhead connector

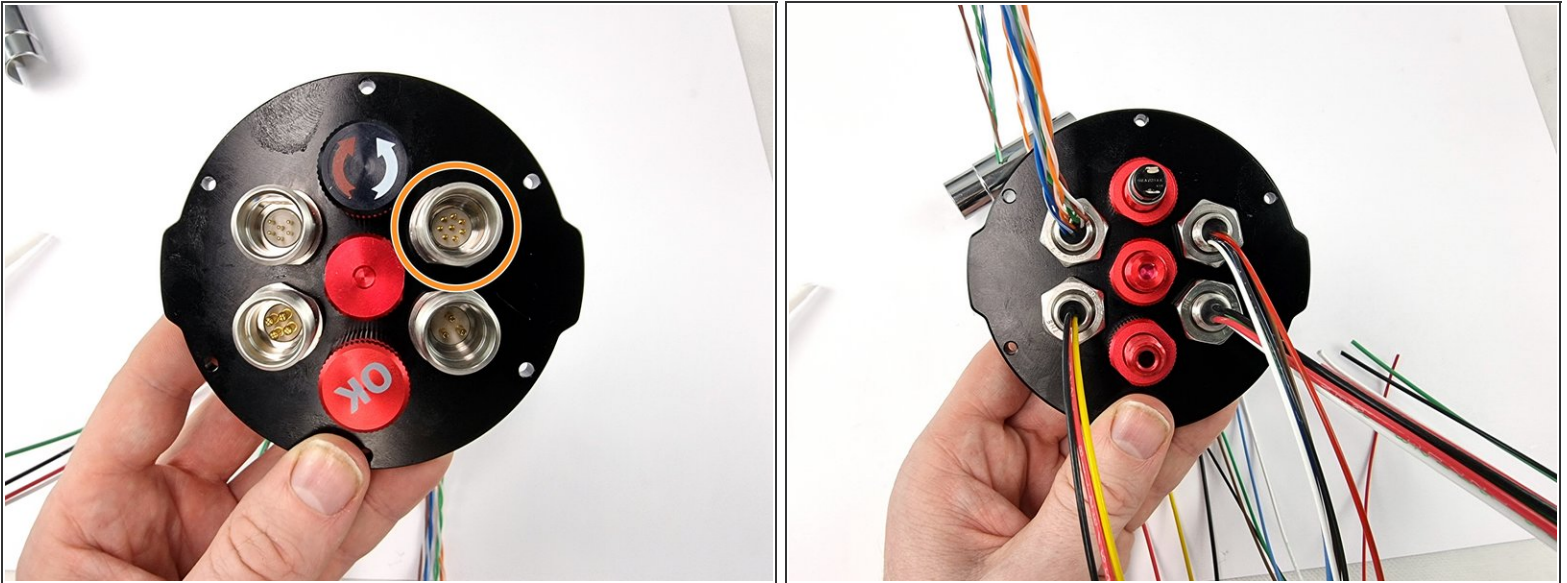
Step 18

- Install the 6 pin bulkhead connector in the top left hole of the end cap
- Install the nut on the back side of the bulkhead connector and tighten with the penetrator wrench and a 17mm spanner

Step 19

- Locate and unpack the 8 pin bulkhead connector
- Remove the nut and the o-ring from the bulkhead connector
- Lubricate the o-ring with silicone grease
- Install the o-ring back onto the bulkhead connector

Step 20



- Install the 8 pin bulkhead connector in the top right hole of the end cap
- Install the nut on the back side of the bulkhead connector and tighten with the penetrator wrench and a 17mm spanner

Step 21



- Unpack the O-ring Flange
- There will be 2 thick o-rings and 1 thin o-ring.

Step 22

- Apply a thin coat of silicone grease to the 2 thick o-rings.
- Install one of the o-rings into the first groove of the flange.
- Install the second o-ring into the last groove of the flange.

Step 23

- Apply a thin coating of silicone grease to the thin o-ring.
- Install the thin o-ring to the face of the flange.

Step 24

- Place the end cap onto the o-ring flange. Carefully feed the wires from the bulkhead connectors through the centre of the flange
- Grab the bag of screws that comes with the end cap.
- Install the 6 screws into the end cap and tighten them down using a 2.5mm hex key to ensure a good seal on the o-ring.