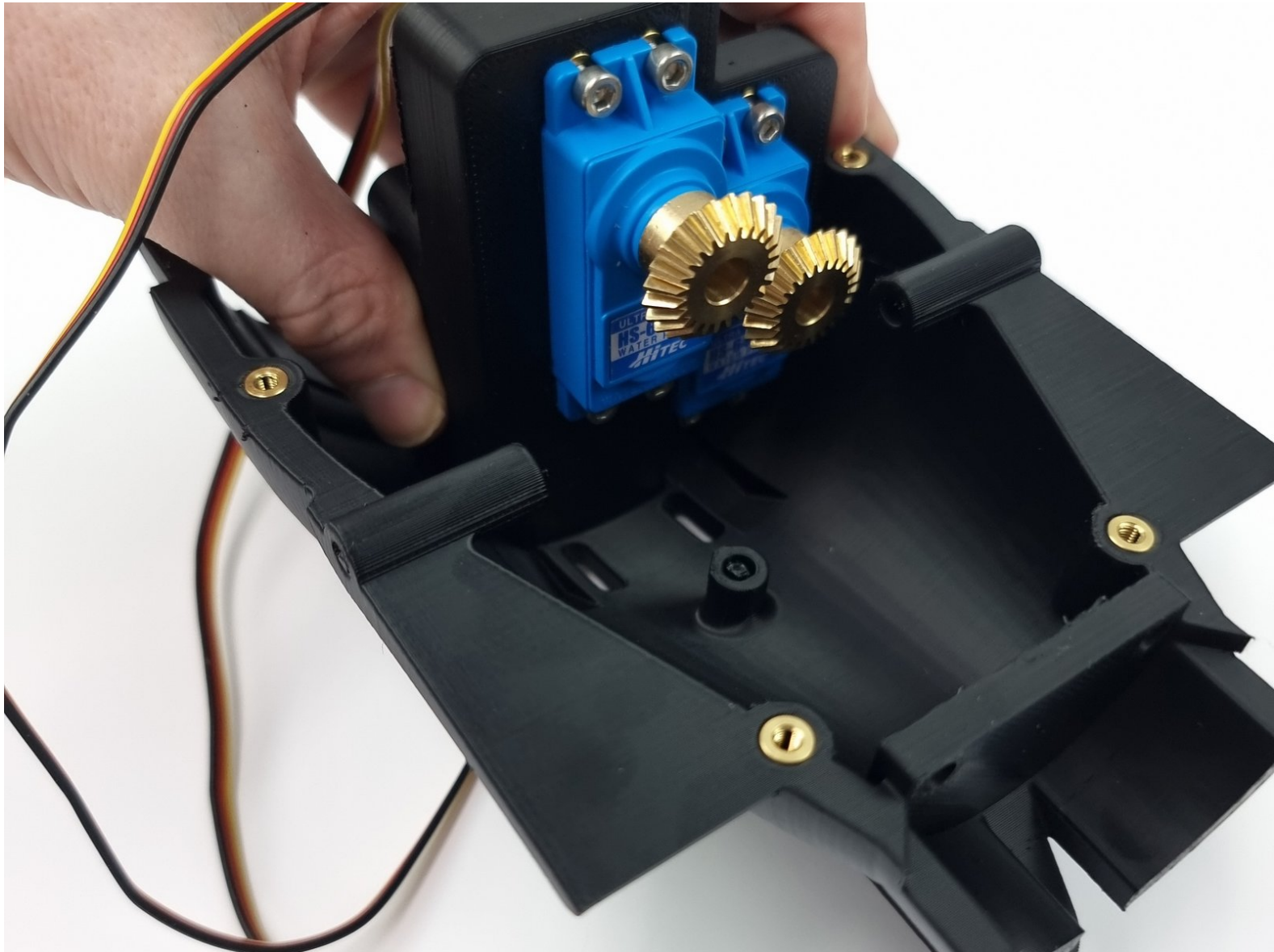




2. Bottom Aft Cap Assembly

Written By: REA



 **TOOLS:**

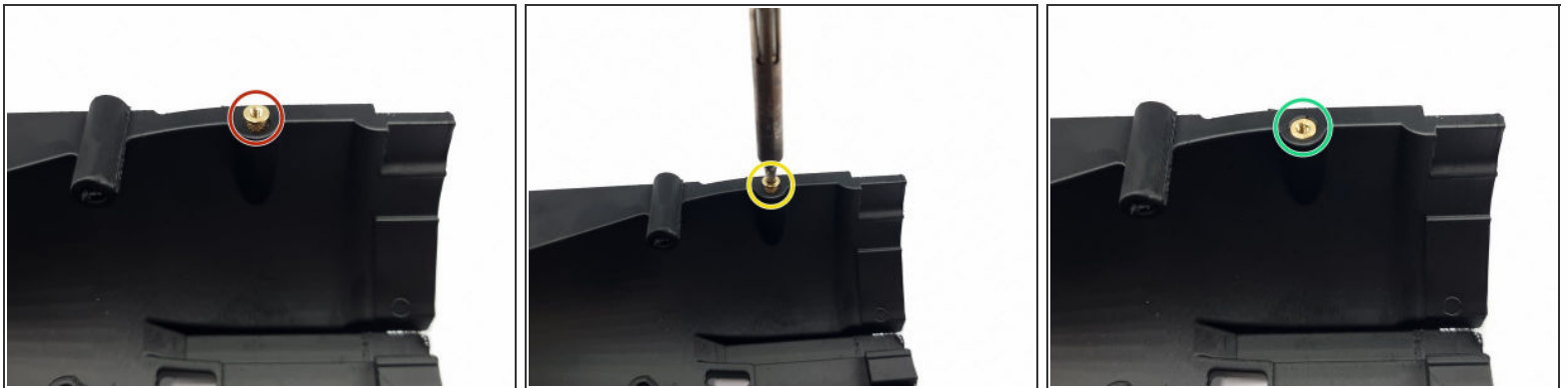
- [Soldering Iron](#) (1)
-

Step 1 — Threaded Inserts



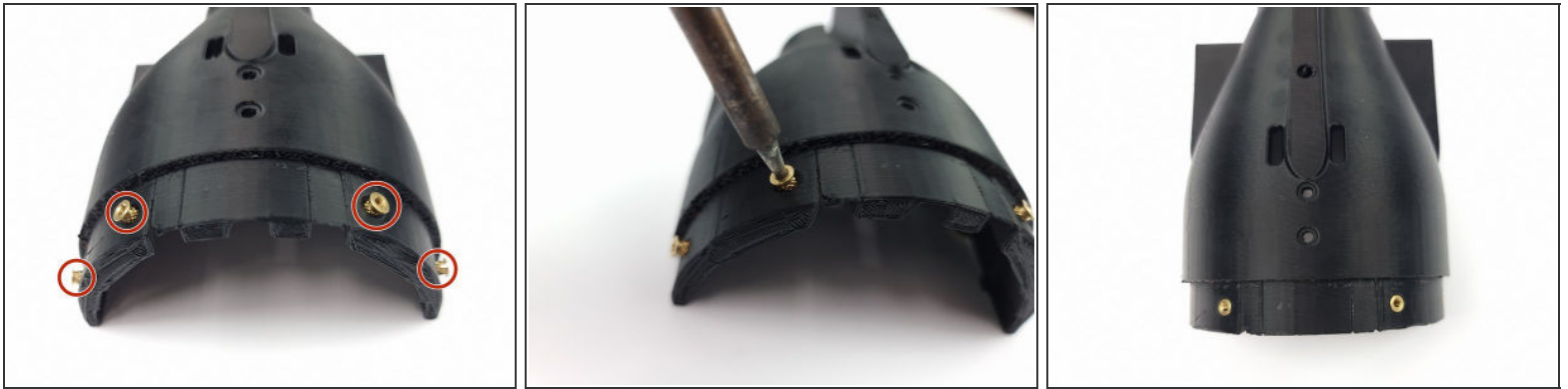
- Find this bag of M3 Threaded Inserts.
- ⓘ We heat set these inserts into or 3D Printed components using a soldering iron.

Step 2 — Installing Inserts into Bottom Cap



- Place an insert into the hole. Don't try to insert it all the way.
 - Put the tip of the soldering iron into the insert and as the insert heats up you will be able to gently push it into the hole
 - Push it in until the insert is flush with the surface.
- ➡ Install the other 3 inserts on this side of the cap using the same procedure,

Step 3 — Installing Inserts into Bottom Cap - Continued



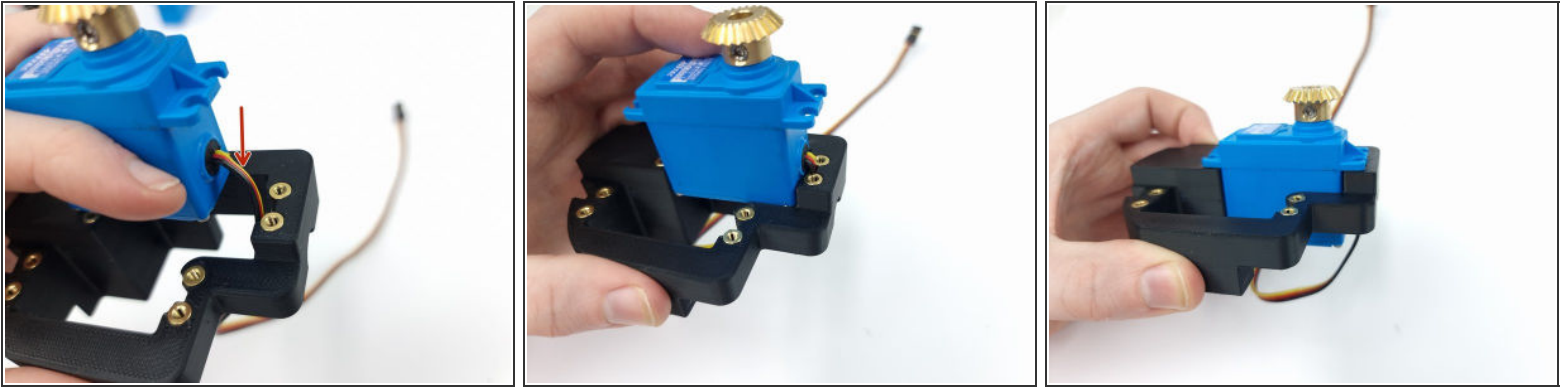
- Following the same procedure place the inserts on the bottom of the cap.
- ⓘ There are 4 inserts to be inserted on the bottom. These are to screw the cap to the bottom hull.

Step 4 — Aft Servo Mount



- Locate the Aft Servo Mount and install the threaded inserts
- There are 8 inserts on the Front and 2 on the bottom

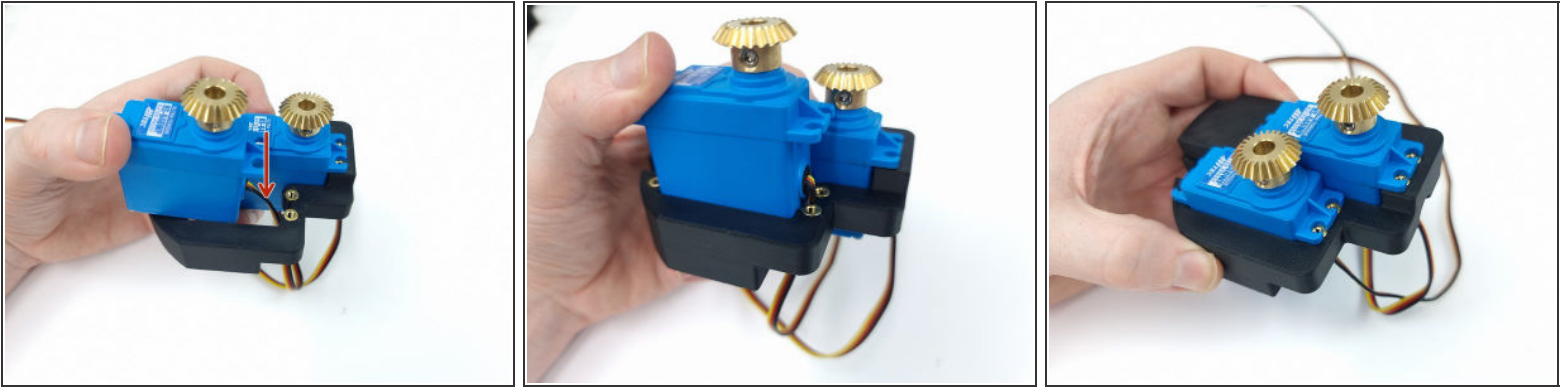
Step 5 — Install the first Servo



⚠ Before Installing the servo's ensure you have waterproofed them using this guide - [Waterproof your Servo](#)

- Insert the first servo into the Aft Servo mount, make sure you feed the wire through first.
- As you push the servo into the mount pull the wire downwards to ensure there is no slack and help it slide the servo into place
- ⓘ Once inserted ensure it is sitting flush all the way around

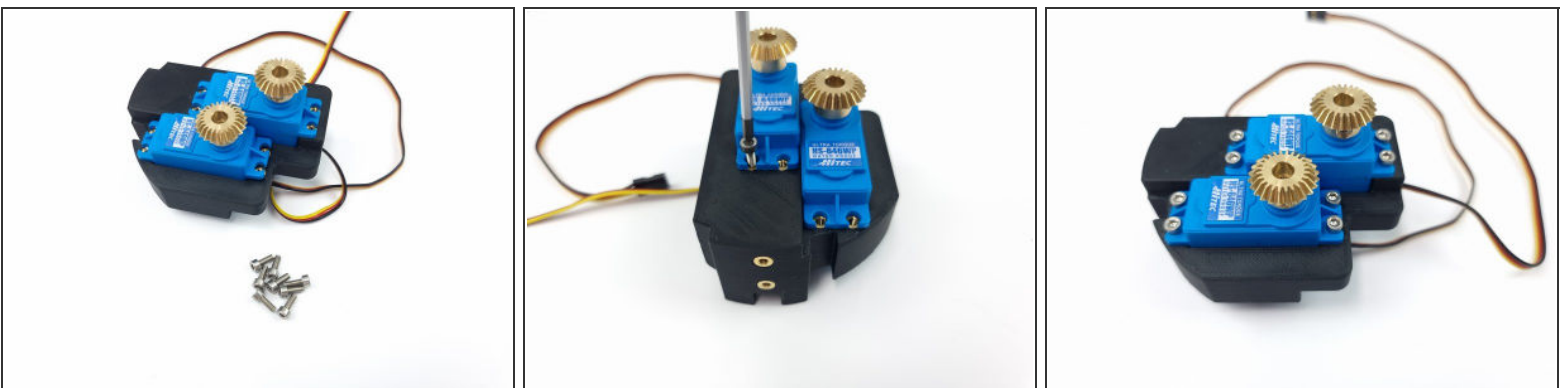
Step 6 — Install the Second Servo



⚠ Before installing the servo's ensure you have waterproofed them using this guide - [Waterproof your Servo](#)

- Insert the second servo into the mount again ensuring to feed the wire through first.
- Pull the wire as you push the servo down to remove any slack.
- i** Once fully inserted ensure it is sitting flush with the mount

Step 7 — Install M3 Screws



- i** You need 8 x M3 x 8mm Socket Head Cap Screws to secure the servos to the mount
 - Install the 4 screws for each servo

Step 8 — Install servo mount into bottom cap

- Place the servo mount into the bottom cap as shown.
- Once in place turn the cap upside down while holding it in place and insert the 2 screws to fix it into place