

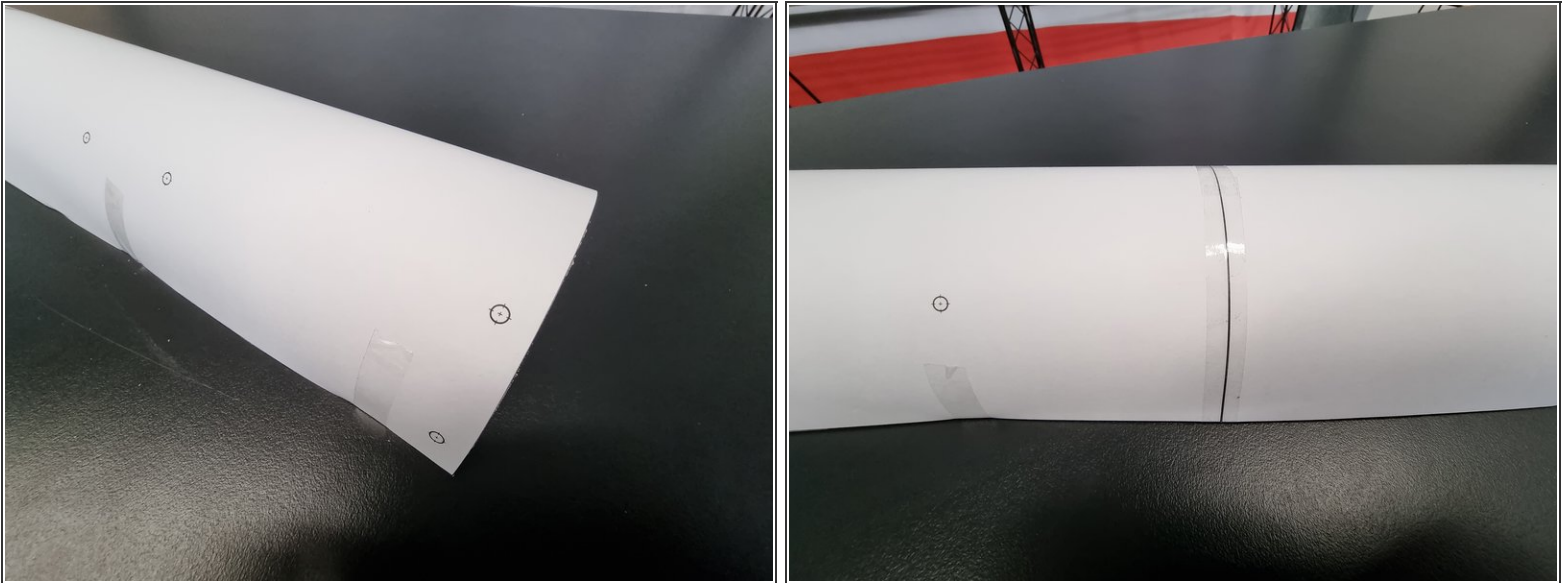


1. Bottom Hull Preparation

Written By: REA

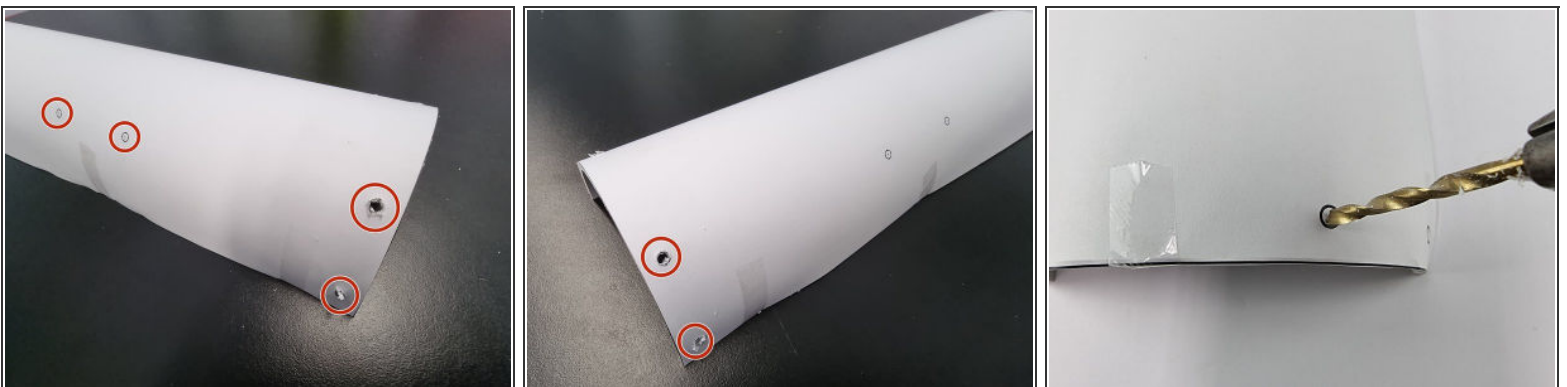


Step 1 — Hole Drilling Template



- We need to drill the holes in the Bottom Hull to screw the Hull Supports into
- Print the attached PDF and cut it to size. Ensure that you print it 100% scale you will need to print it over multiple pages and stick them together.
- Tape it onto the bottom hull ensuring that it is aligned correctly.

Step 2 — Drilling the Holes



- Insert a 4mm drill bit into your drill
 - Drill all the marked holes on the template into the hull
- ⚠ Ensure you deburr the holes before proceeding to the next step**

Step 3



- Once all the holes are drilled you can remove the paper template.
- The bottom hull is now ready for assembly

Step 4

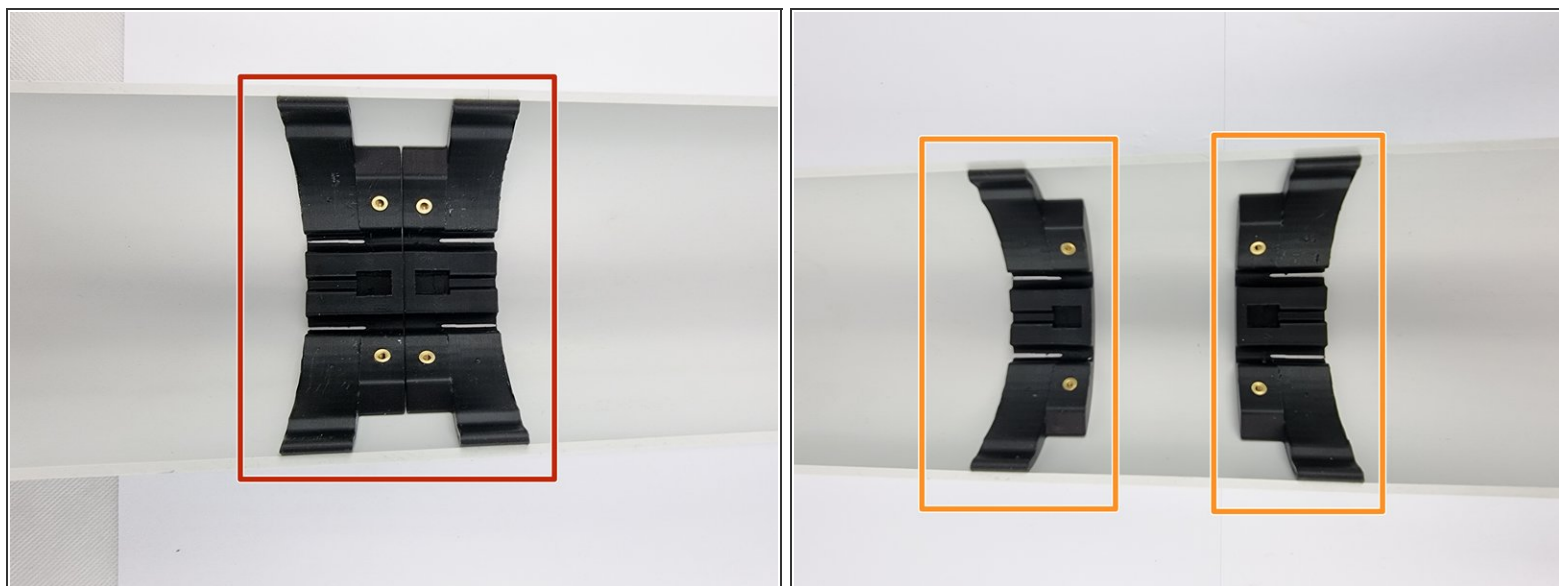


- Find the Hull Supports and install the threaded inserts
- 4 total are to be installed.

Step 5

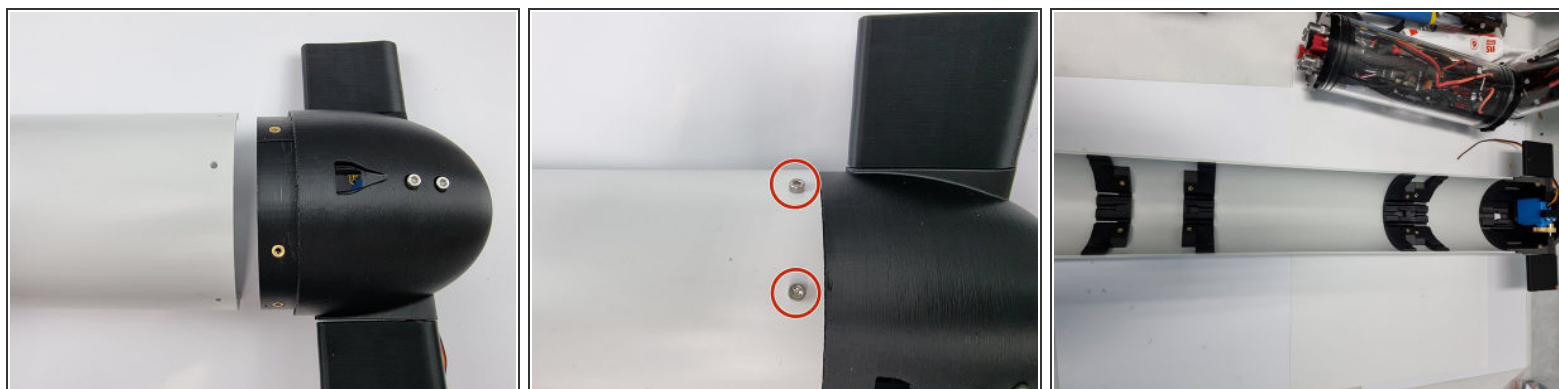
- Install a hull support at the front of the bottom hull.
- Secure it in place by inserting M3x8mm Socket Head Cap Screws

Step 6



- Install 2 more hull supports back to back for the rear of the front Ballast Tank and the front of the PPM.
- Install the final 2 hull supports for the rear of the PPM and the front of the rear Ballast Tank

Step 7



- Now install the bottom fore and aft caps to the hull.
- Secure them with 4 x M3x8mm Socket Head Cap Screws